



Cast Products, Inc.

Installation Procedure

SA2405

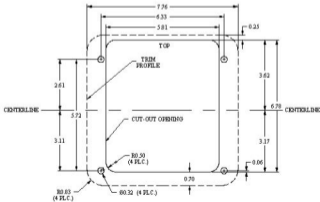
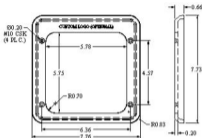
Inside-the-Bumper Mount

Fore-Warn Siren Speaker

1) The speaker unit is required to be mounted on a flat surface with at least 7 3/4" vertical height for the trim bezel to bolt to. See FIGURE 1.

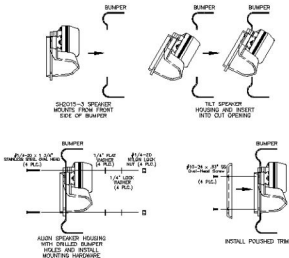
2) Remove the speaker trim bezel from the speaker assembly. Four #1/4-20 x 1 3/4" stainless bolts (provided) will bolt the siren housing to the bumper. Four #10-24 x 5/8" stainless screws (provided) will bolt the trim bezel to the siren housing, covering the mounting hardware and cut opening.

3) After locating a position for mounting (making sure that there is clearance behind the bumper for the siren speaker), mark the opening cut-out and hole location for the siren housing. See FIGURE 2.



4) Drill four clearance holes for the #1/4-20 bolts and cut the opening in the bumper face for the speaker to install through.




5) Install the speaker unit in the bumper (from the front side of the bumper) by tilting the speaker housing rearward, inserting through the cut opening and aligning the mounting holes with the drilled holes in the bumper. See FIGURE 3.



6) Install the #1/4-20 x 1 3/4" stainless steel oval head screws, washers, lock-washers and #1/4-20 nylon lock nuts through the speaker housing and bumper. It is suggested to use some sort of medium grade loc-tite on the threads as well. Tighten all bolts.

7) Install the ST2026 trim with the #10 x 5/8" stainless screws. Tighten all bolts.

8) Continue with the electrical connections as per their manufacturers directions.

SA2405 IN-THE-BUMPER MOUNT			
4 OF EACH:	1/4" FLAT WASHER	1/4" LOCK WASHER	1/4-20 NYLON LOCK NUT
1/4-20 x 1 1/4" STAINLESS STEEL OVAL HEAD			

FOR 1 SIREN