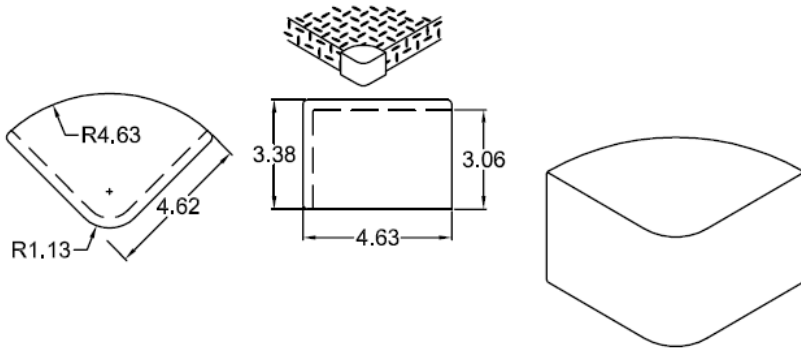


Bumper Corners

BC0001

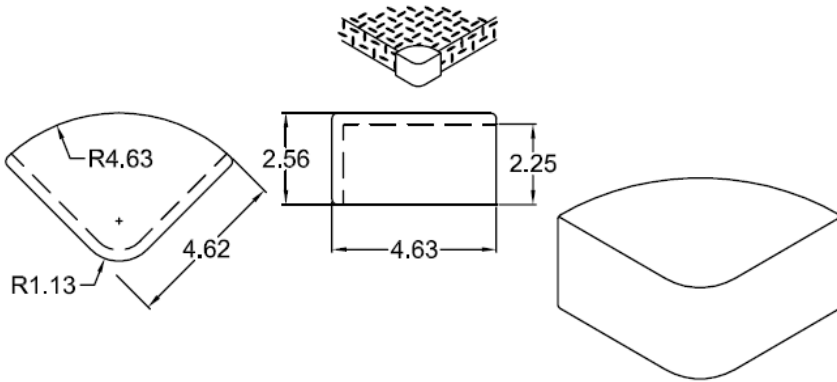
BC0001 Bumper Corner Cover



- 1) Finish: Bright polished.
- 2) Preferred method of installation: Tack weld from underneath.
- 3) Nominal thickness of 1/4".

BC0002

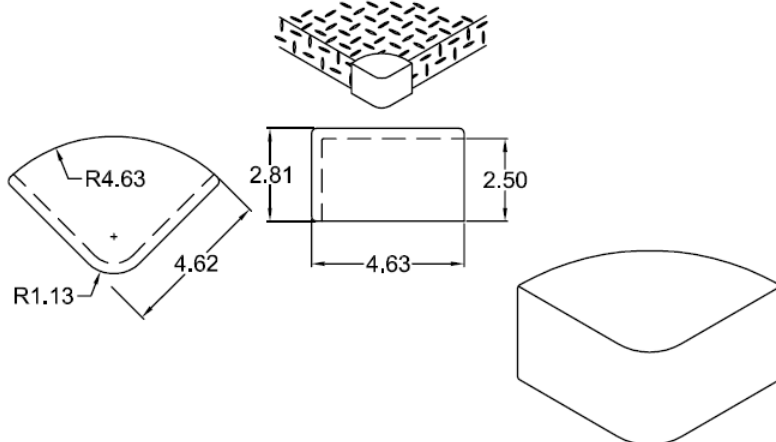
BC0002 Bumper Corner Cover



- 1) Finish: Bright Polished.
- 2) Preferred Installation: Tack weld from underneath.
- 3) Nominal Thickness of 1/4".

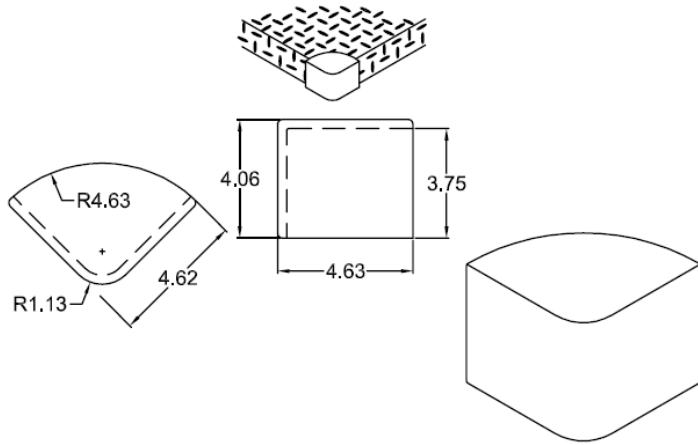
BC0003

BC0003 Bumper Corner Cover



- 1) Finish: Bright Polished.
- 2) Preferred Installation: Tack weld from underneath.
- 3) Nominal Thickness of 1/4".

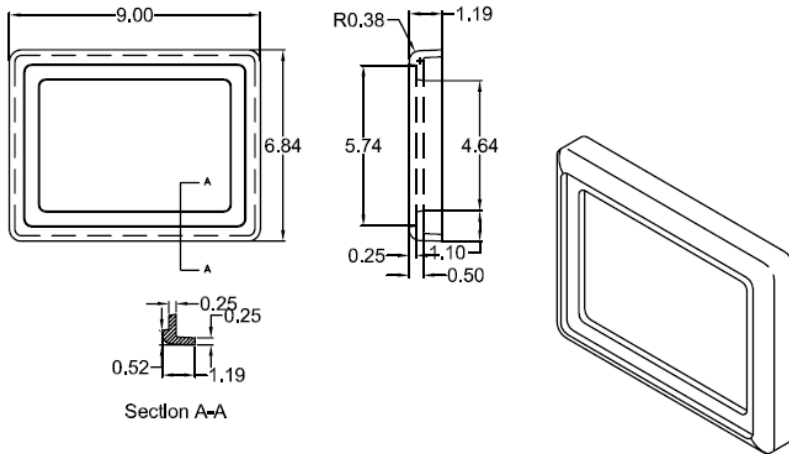
BC0006



BC0006 Bumper Corner Cover

- 1) Finish: Bright Polished.
- 2) Preferred Installation: Tack weld from underneath.
- 3) Nominal Thickness of 1/4".

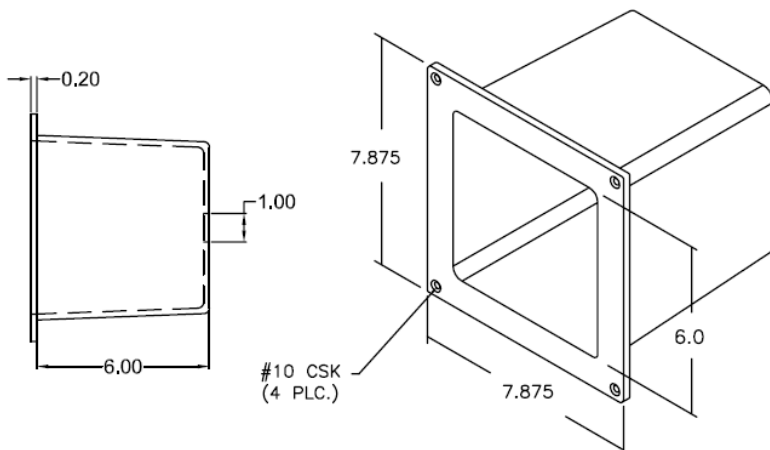
BC0010



BC0010 Dock Bumper Spacer

- 1) Serves as a spacer and trim for the rubber bumper blocks.
- 2) Finish: polished.

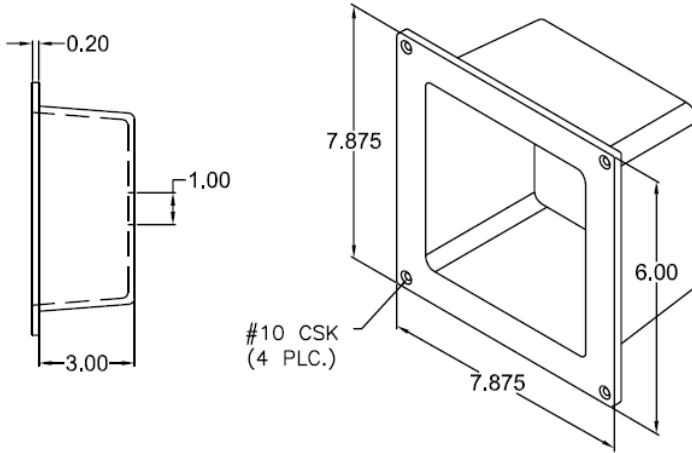
BC0011



BC0011 Tow-Eye Cover 6" Deep

- 1) Finish: Flange is polished. Inside is wheel - a - brated.

BC0012

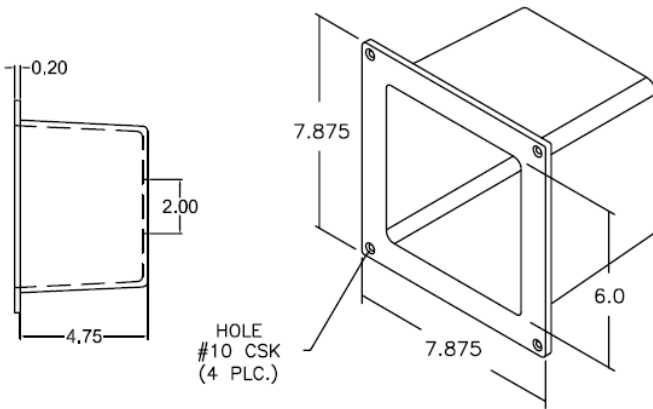


1

BC0012 Tow-Eye Cover 3" Deep

1) Finish: Flange is polished.
Inside is wheel - a - brated.

BC0013



BC0013 Tow - Eye Cover 4 3/4" Deep

1) Finish: Flange is polished.
Inside is wheel - a - brated.