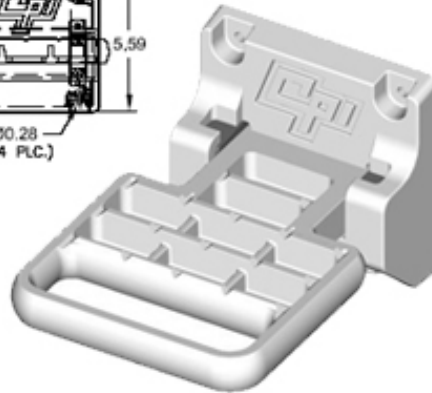
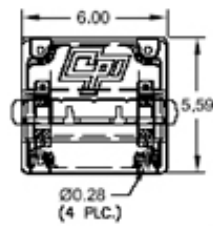
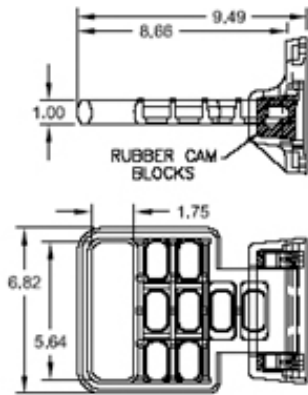


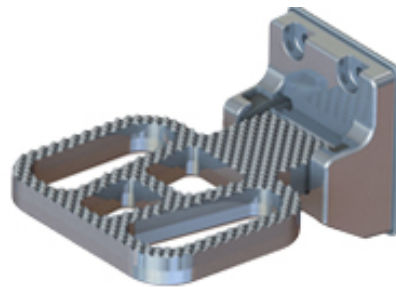
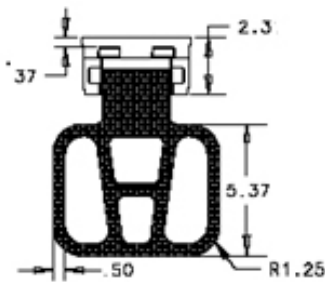
SP4301



SP4301 Folding Step w/ Hand-Hold & Raised Pyramid Tread

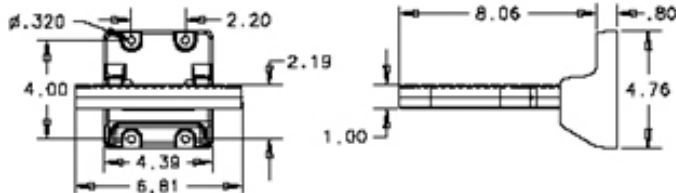
- 1) Finish: Edges are polished. All other surfaces are bead-blasted or ball-burnished.
- 2) Designed to fold-up when not in use and to exceed the requirements of 1901 & 1904-91 specs requiring 500 lbs. minimum load, 35 square inch area, 8" depth, etc....

SP4401

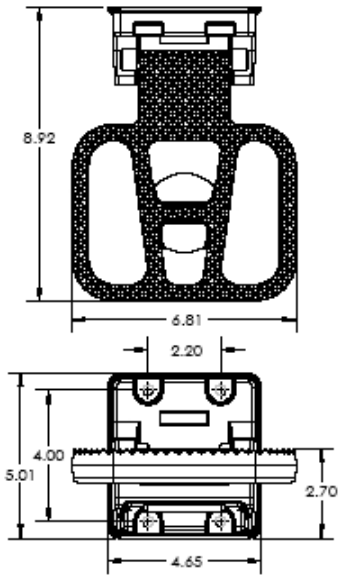


SP4401 Folding Step w/ Hand-Hold & Pyramid Tread

- 1) Finish: Edges are polished. All other surfaces are bead-blasted or ball-burnished.
- 2) Designed to fold-up when not in use and to exceed the requirements of 1901 & 1904-91 specs requiring 500 lbs. minimum load, 35 square inch area, 8" depth, etc....

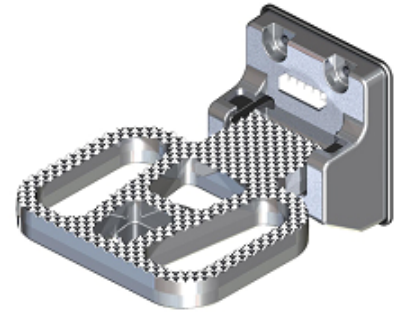


SP4410



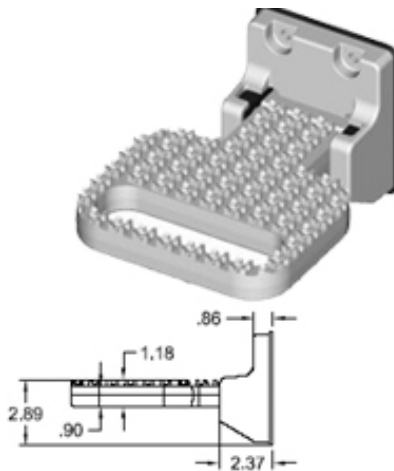
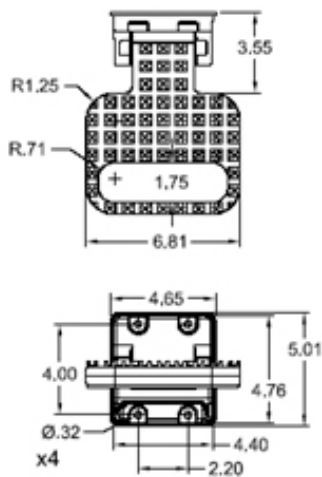
SP4410-1CH-LED

2" Round Logo - Folding Step
Assembly w/ LED Lights x2



- 1) Finish: Exterior surfaces are bright polished, then chrome plated to CASS 24 specifications.
- 2) Incorporates upper and lower mount LED lights to illuminate step platform and underneath the step assembly.
- 3) Use standard 2" diameter self adhesive logo's for customer user look.

SP4500



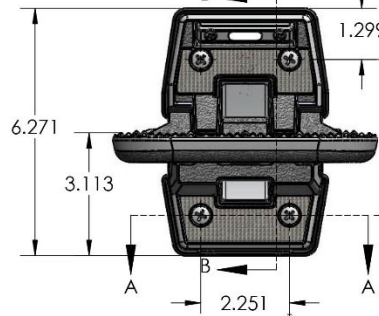
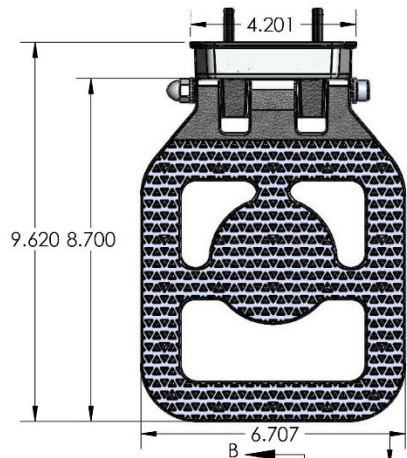
SP4500

Folding Step w/ Hand-Hold
& Pungy Tread

- 1) Finish: Edges are polished. All other surfaces are bead-blasted or ball-burnished.
- 2) Designed to fold-up when not in use and to exceed the requirements of 1901 & 1904-91 specs requiring 500 lbs. minimum load, 35 square inch area, 8" depth, etc....

SP6610

SP6610-1CH Folding Step Assembly



- 1) Finish: Chrome plated.
- 2) For use with TecNiq LED Lights x2
- 3) Silver Reflective Tape in upper and lower positions.
- 4) Rubber gasket included.

