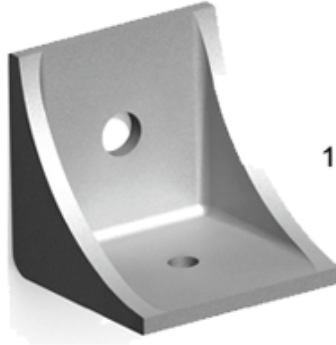
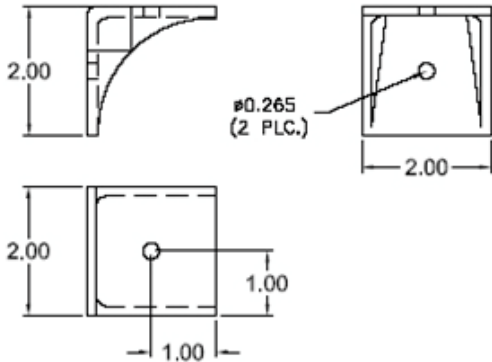


Shelf Supports

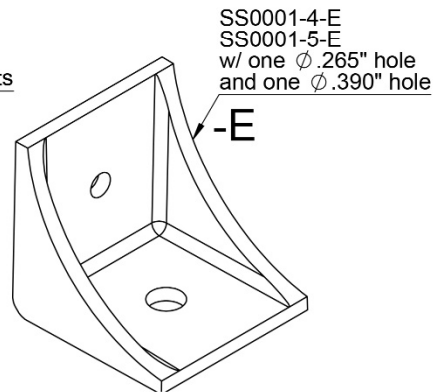
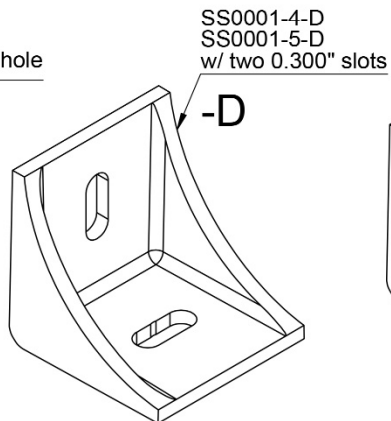
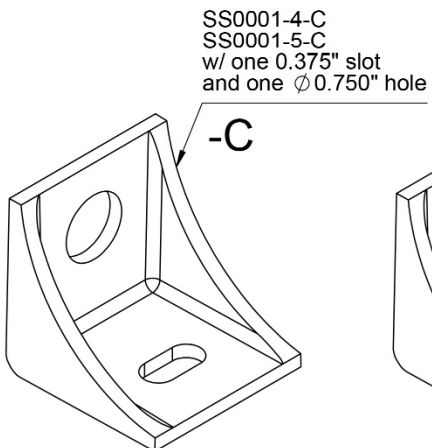
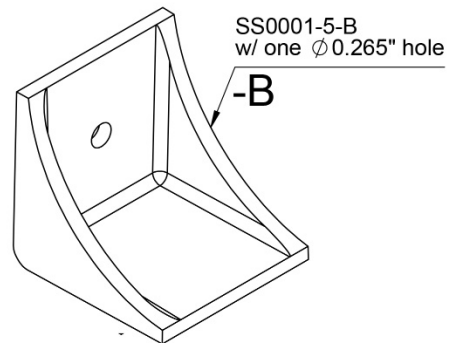
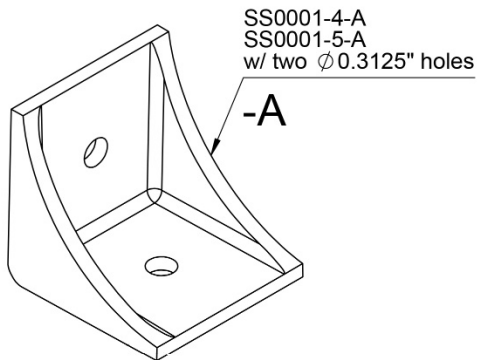
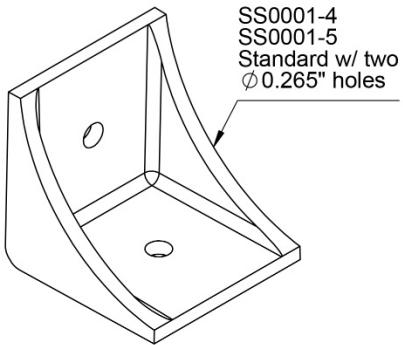
SS0001



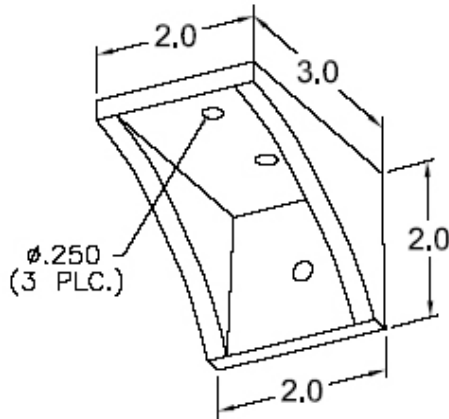
SS0001 Shelf Support Bracket

1) Finish: Wheel-a-brated.

SS0001-A -B -C -D -E



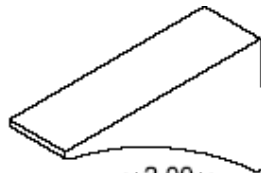
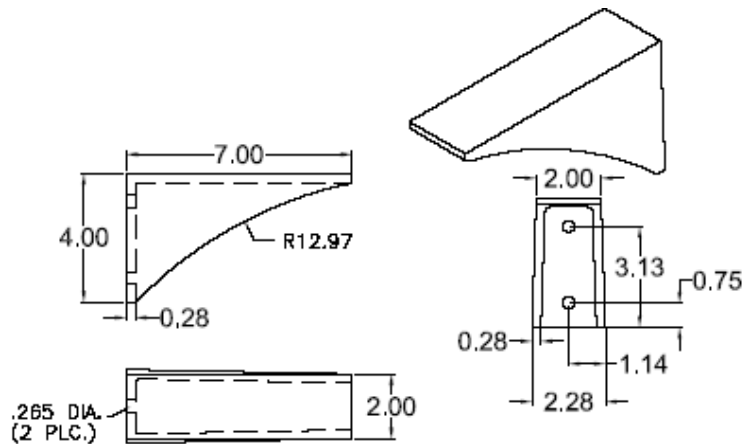
SS0002



SS0002 Shelf Support Bracket

1) Finish: Wheel-a-brated.

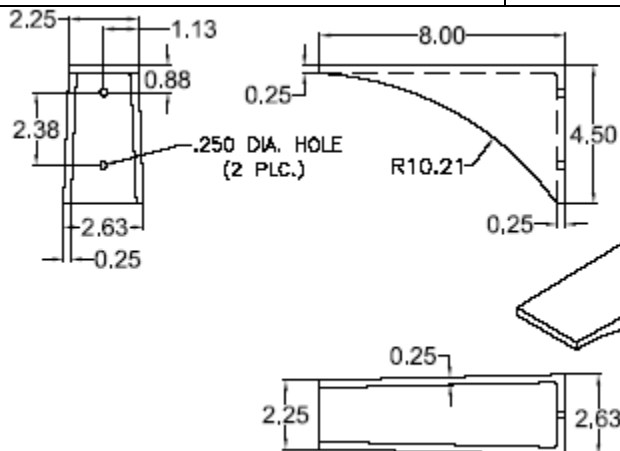
SS0003



SS0003 Shelf Support Bracket

1) Finish: Wheel-a-brated.

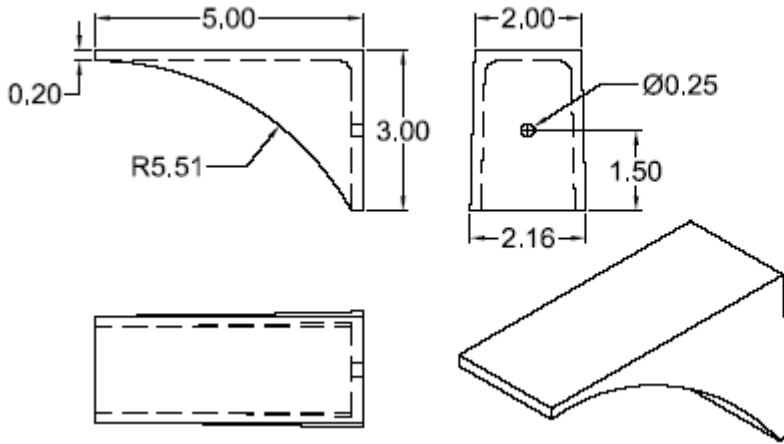
SS0004



SS0004 Shelf Support Bracket

1) Finish: Wheel-a-brated.

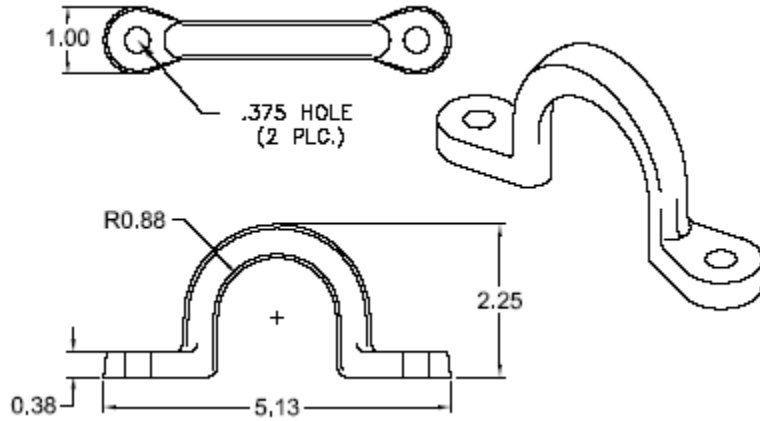
SS0005



SS0005 Shelf Support Bracket

1) Finish: Wheel-a-brated.

SS0007

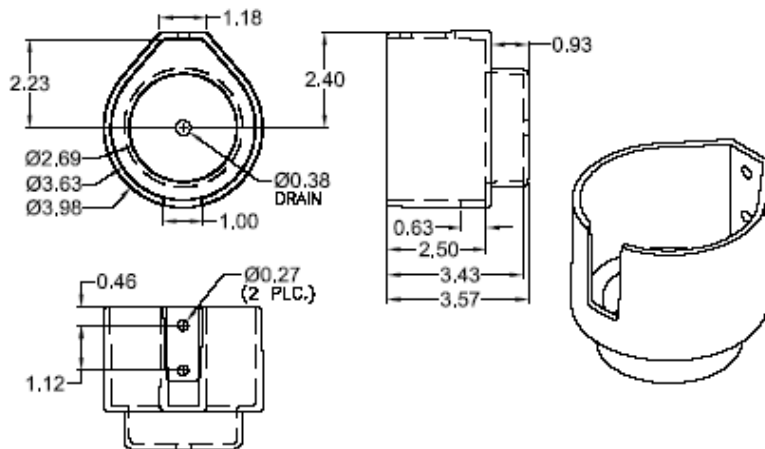


SS0007

Rope Tie Ring

1) Finish: as cast, polished,
ball-burnished or wheel-a-brated.

SS0014

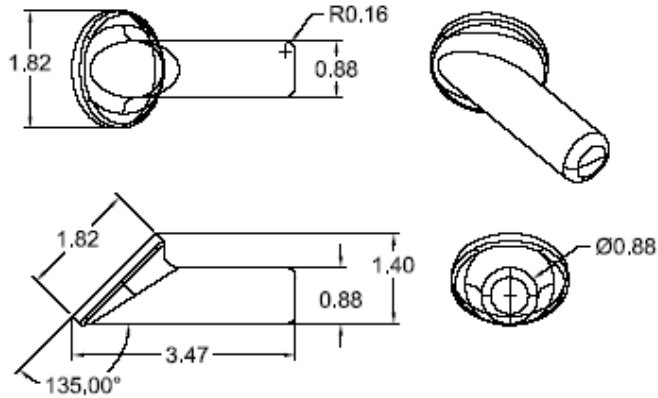


SS0014

Cup Holder

1) Finish: polished,
wheel-a-brated, or ball-burnished.

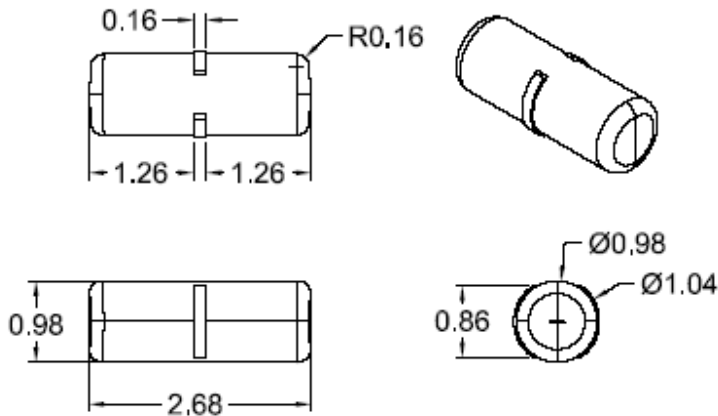
SS0018



SS0018 **Angled Tube Brace**

- 1) Finish: Wheel-a-brated.
- 2) Angle: 135°

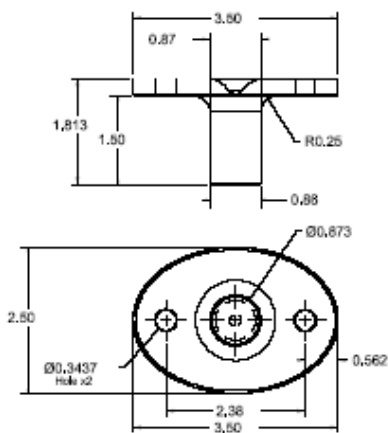
SS0019



SS0019 **Tube Splice Connector**

- 1) Finish: Wheel-a-brated.

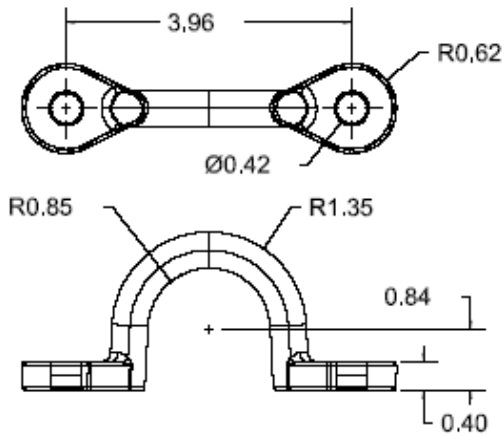
SS0022



SS0022 **Rear Ladder** **Mounting Block**

- 1) Finish: all exterior surfaces are ball-burnished.

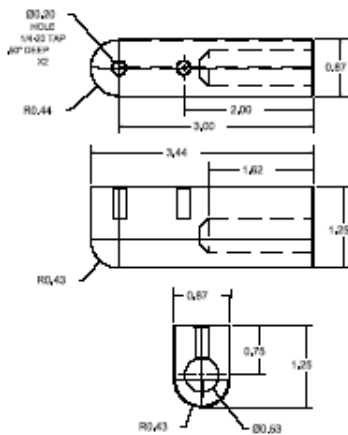
SS0025



SS0025 Rope Tie Ring

1) Finish: all exterior surfaces are ball-burnished.

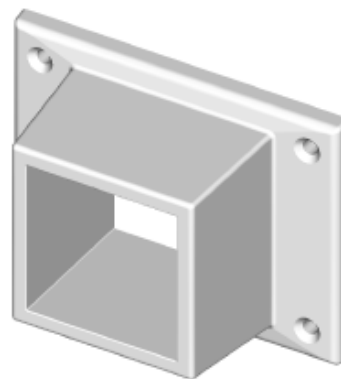
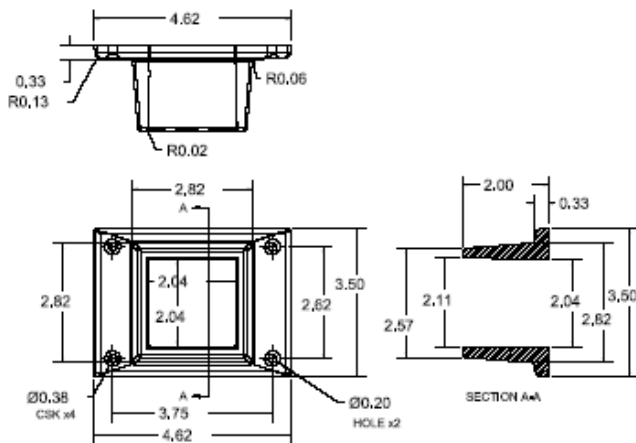
SS0028



SS0028 Butterfly Single Pivot Casting

1) Finish: all exterior surfaces are ball-burnished.

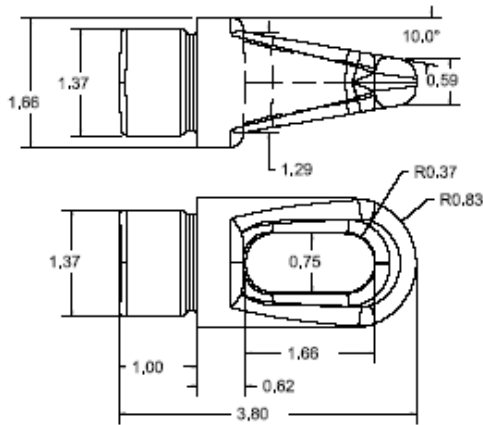
SS0031



SS0031 Combination 2" and 3" Post Base

1) Finish: all exterior surfaces are ball-burnished.

SS0034

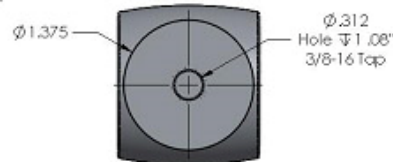
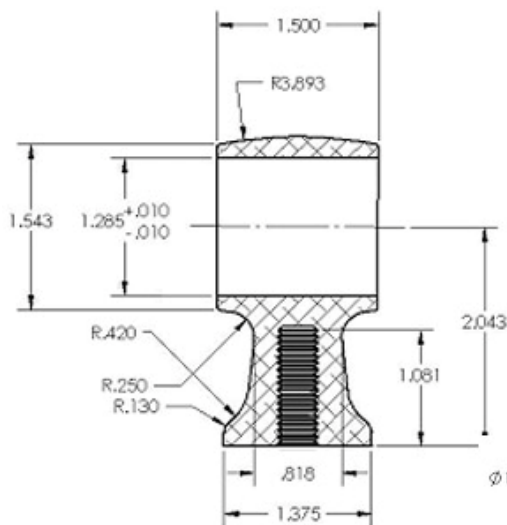


SS0034

Butt-Bar End Cap Casting w/ Hook

1) Finish: all exterior
surfaces are
wheel-a-brated

SS0037



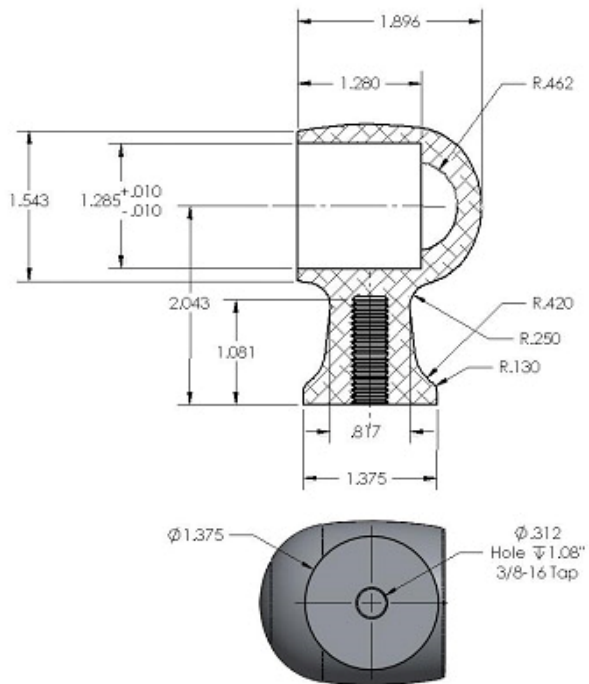
SS0037-1

Grab Rail Support, 1 1/4" OD Tube, Center Mount Casting

1) Finish: Polished Exterior



SS0038



SS0038-1
Grab Rail Support, 1 1/4" OD
Tube, End Cap Casting

1)Finish: Polished Exterior

