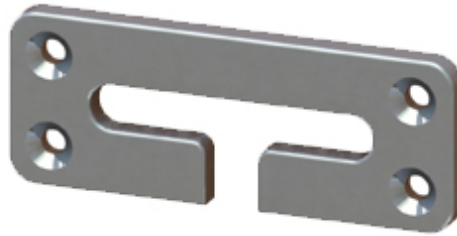
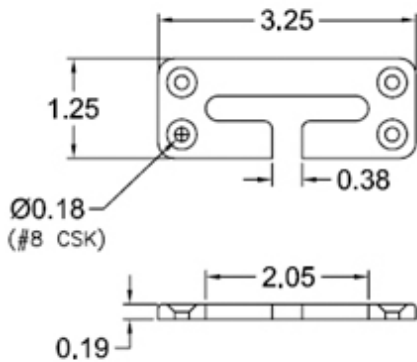


# Flange Rings

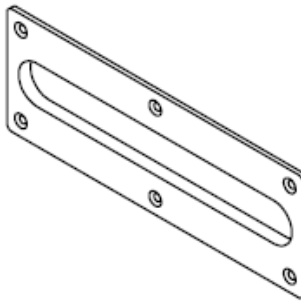
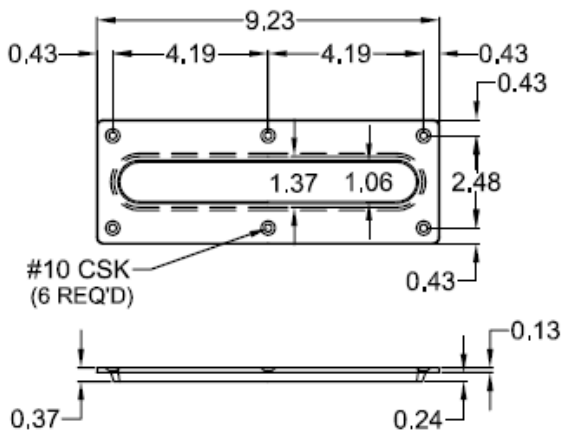
**FR0001**



**FR0001**  
**Seat-Belt Trim**

- 1) Finish: Available polished or ball-burnished.
- 2) Use to trim around the cut-out needed or squad bench for the seat-belt strap.

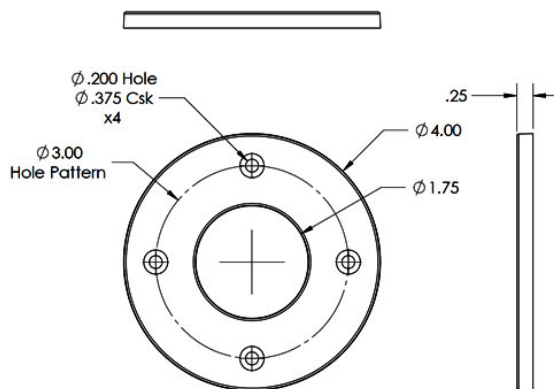
**FR0006**



**FR0006**  
**Slot Plate**

- 1) Finish: Polished.

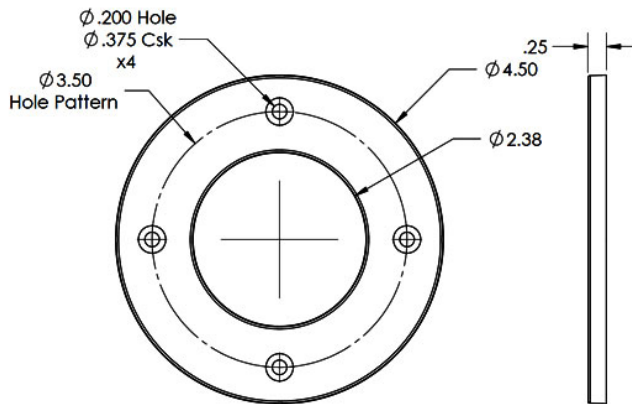
**FR0009**



**FR0009**  
**Flange Ring**  
**1.75" ID x 4.0" OD**

- 1) Finish: Polished exterior.

### FR0010

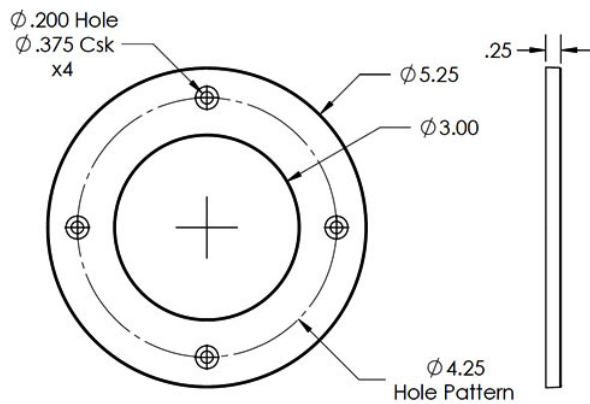


### FR0010 Flange Ring 2.38" ID x 4.50" OD

1) Finish: Polished exterior.



### FR0011

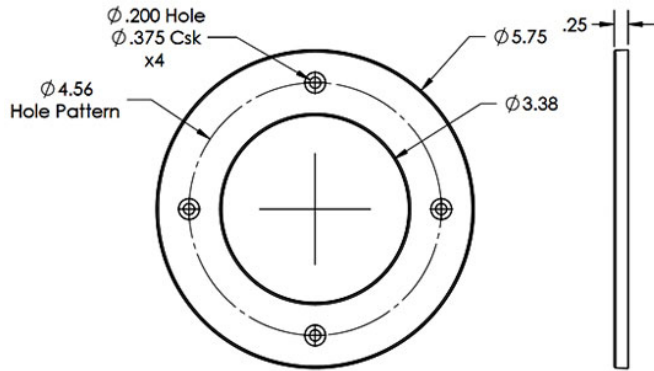


### FR0011 Flange Ring 3.0" ID x 5.25" OD

1) Finish: Polished exterior.



## FR0012

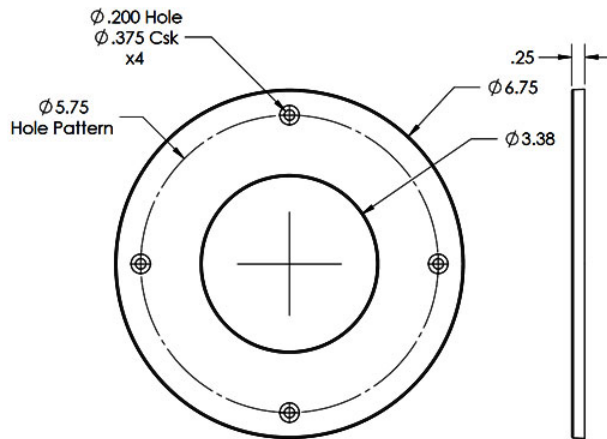


## FR0012 Flange Ring 3.38" ID x 5.75" OD

1) Finish: Polished exterior.



## FR0013

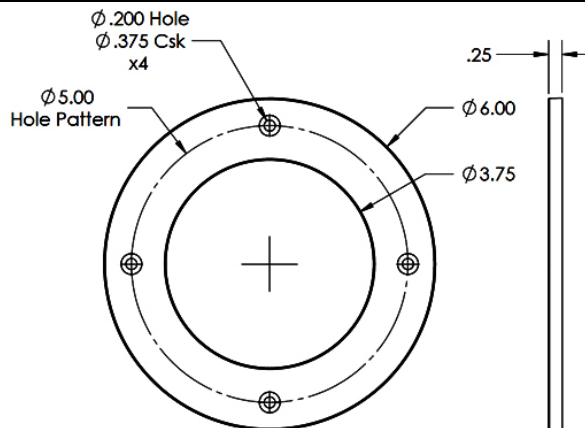


## FR0013 Flange Ring 3.38" ID x 6.75" OD

1) Finish: Polished exterior.



## FR0014

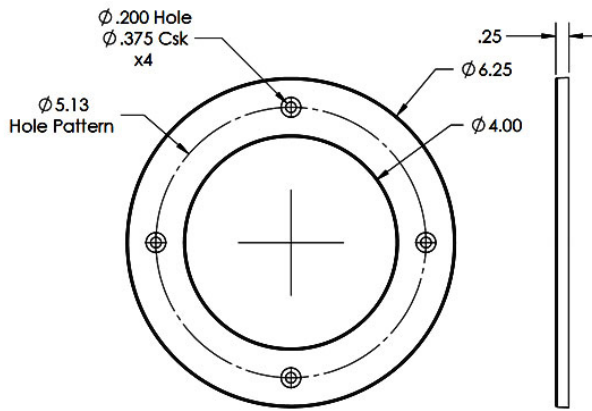


## FR0014 Flange Ring 3.75" ID x 6.0" OD

1) Finish: Polished exterior.



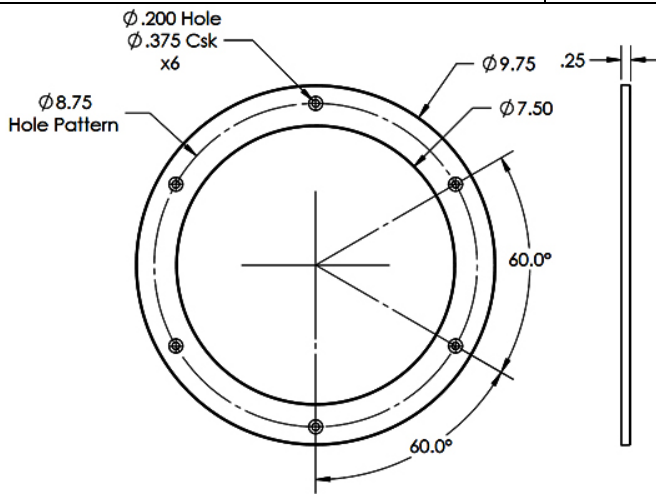
### FR0015



**FR0015**  
Flange Ring  
4.0" ID x 6.25" OD

1) Finish: Polished exterior.

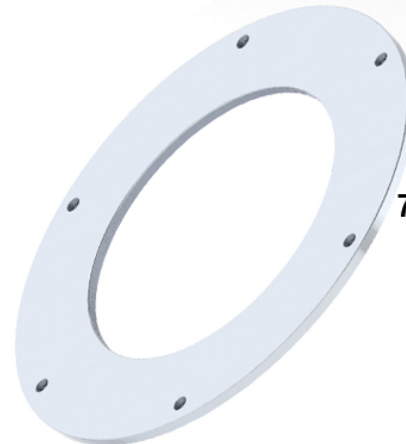
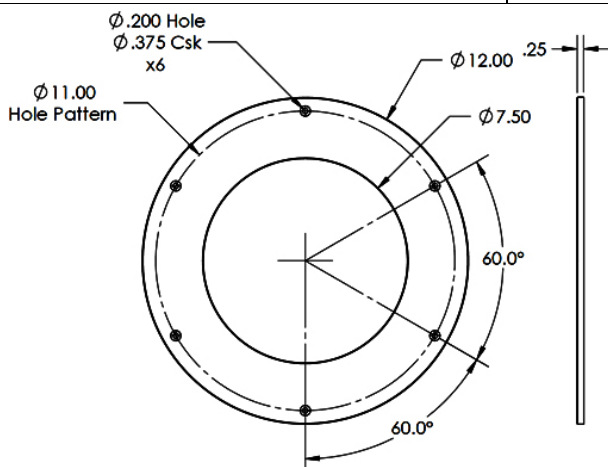
### FR0021



**FR0021**  
Flange Ring  
7.50" ID x 9.75" OD

1) Finish: Polished exterior.

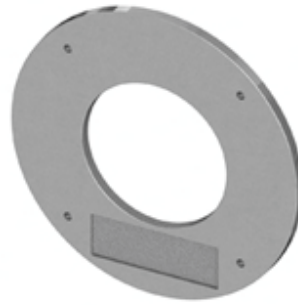
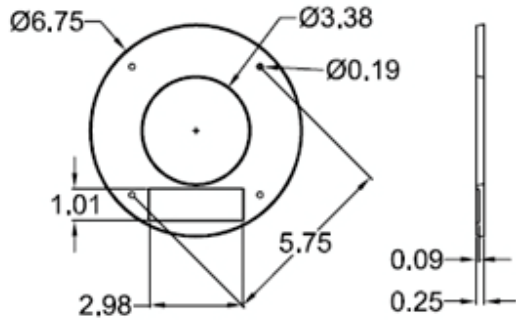
### FR0022



**FR0022**  
Flange Ring  
7.50" ID x 12.0" OD

1) Finish: Polished exterior.

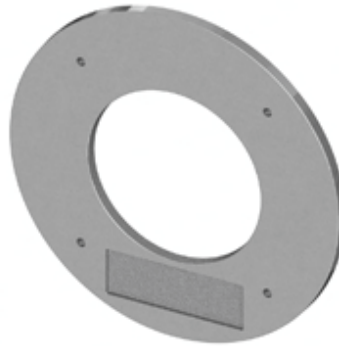
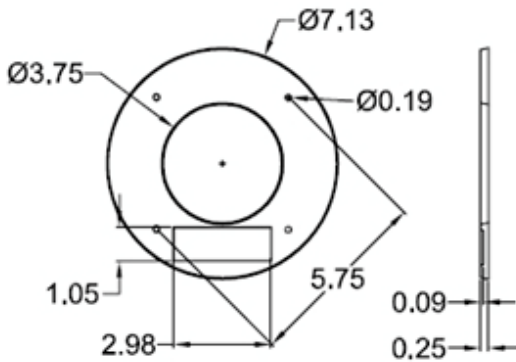
**FR0025**



**FR0025**  
**Flange Ring w/ Tag**  
**Recess (3 3/8" ID)**

1) Finish: Polished.

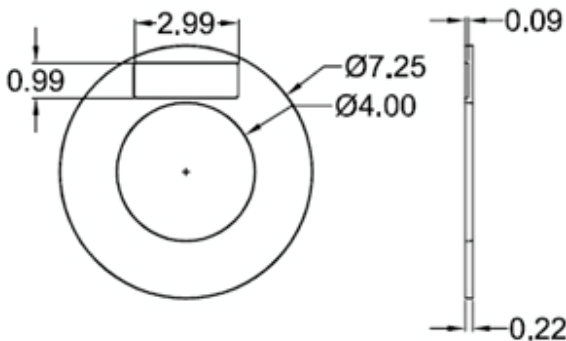
**FR0026**



**FR0026**  
**Flange Ring w/ Tag**  
**Recess (3 3/4" ID)**

1) Finish: Polished.

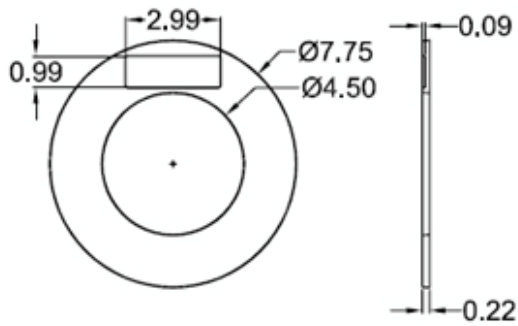
**FR0027**



**FR0027**  
**Flange Ring w/ Tag**  
**Recess (4" ID)**

1) Finish: Polished.

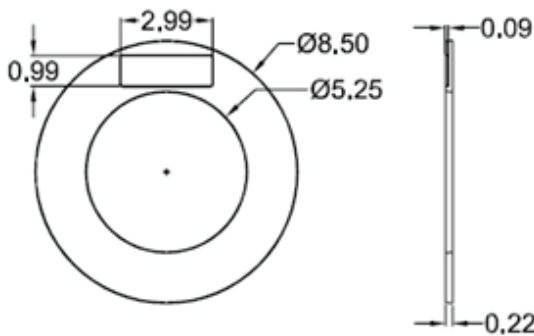
**FR0028**



**FR0028**  
**Flange Ring w/ Tag**  
**Recess (4 1/2" ID)**

1) Finish: Polished.

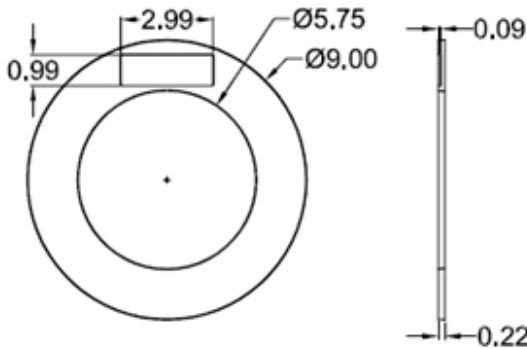
**FR0029**



**FR0029**  
**Flange Ring w/ Tag**  
**Recess (5 1/4" ID)**

1) Finish: Polished.

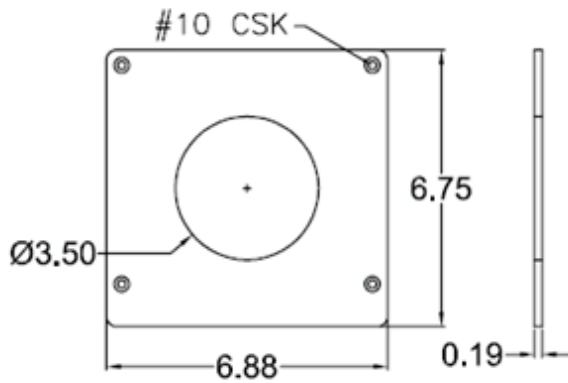
**FR0030**



**FR0030**  
**Flange Ring w/ Tag**  
**Recess (5 3/4" ID)**

1) Finish: Polished.

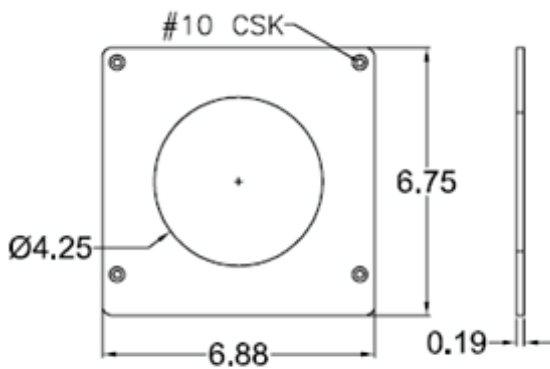
### FR0041



## FR0041 Gauge Trim 3 1/2" I.D.

1) Finish: Polished.

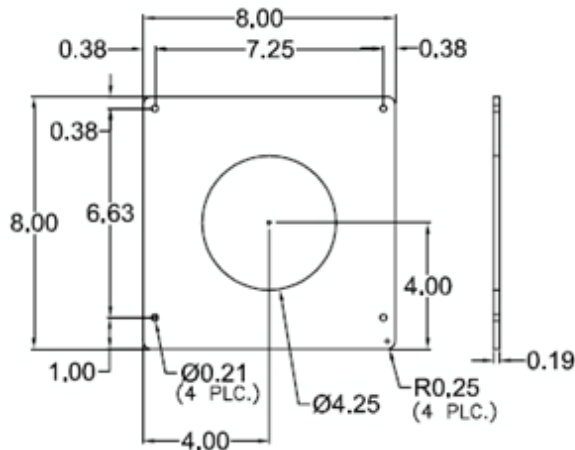
### FR0042



## FR0042 Gauge Trim 4 1/4" I.D.

1) Finish: Polished.

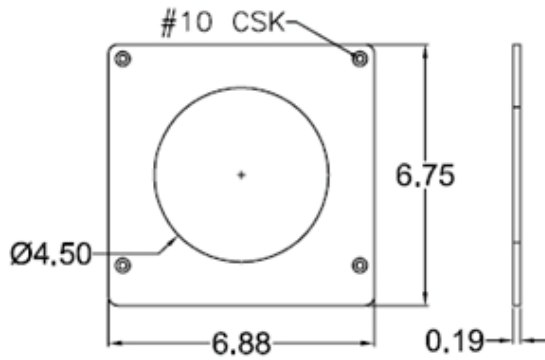
### FR0043



## FR0043 Gauge Trim 4 1/4" I.D.

1) Finish: Polished.

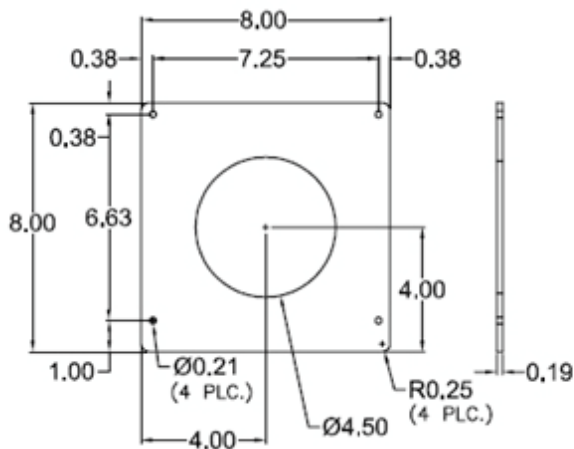
### FR0044



## FR0044 Gauge Trim 4 1/2" I.D.

1) Finish: Polished.

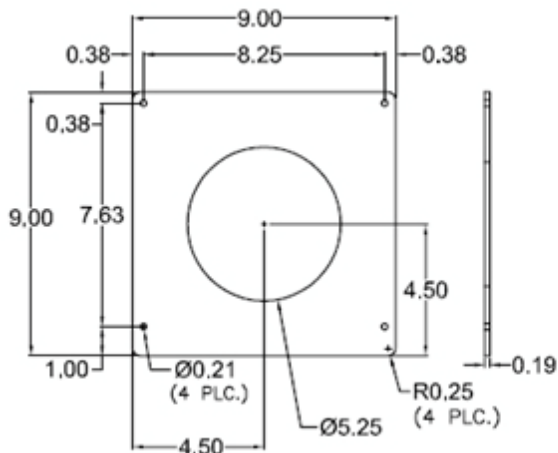
### FR0045



## FR0045 Gauge Trim 4 1/2" I.D.

1) Finish: Polished.

### FR0046

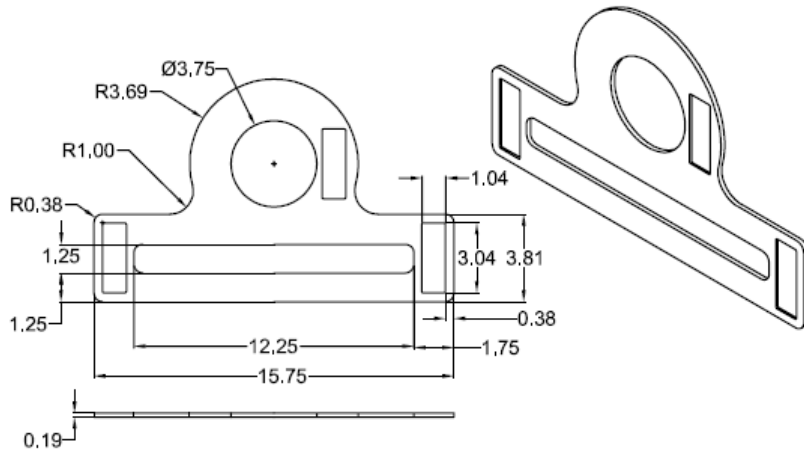


## FR0046 Gauge Trim 5 1/4" I.D.

1) Finish: Polished.



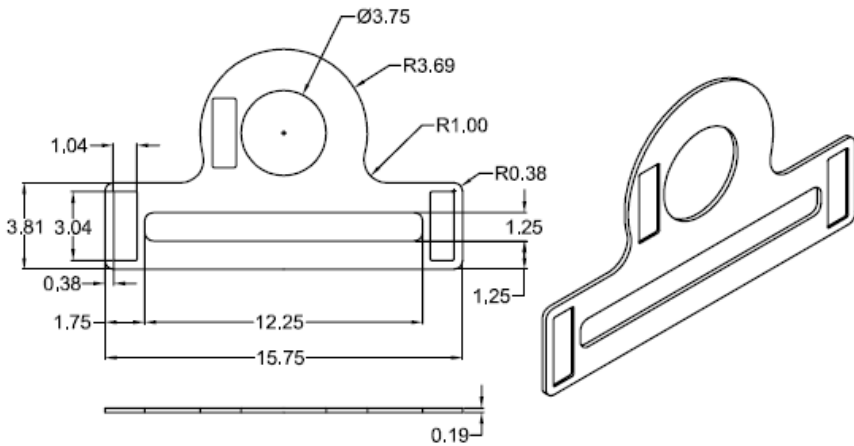
**FR0047**



**FR0047**  
**Pump Panel Trim w/  
Tag Recess (Right  
Side)**

- 1) Finish: Polished.
- 2) Material: 6061-T6 Aluminum

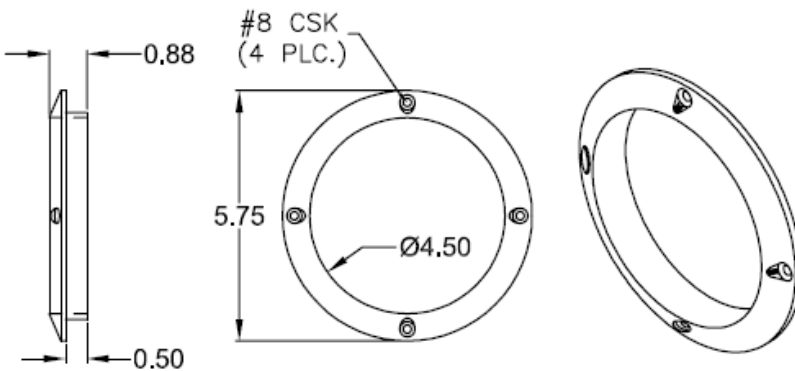
**FR0048**



**FR0048**  
**Pump Panel Trim w/  
Tag Recess  
(Left Side)**

- 1) Finish: Polished.
- 2) Material: 6061-T6 Aluminum

**FR0049**



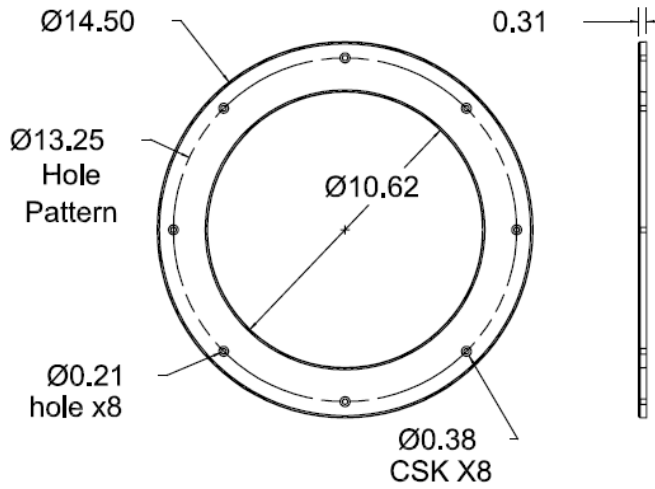
**FR0049**  
**Oxygen Bottle Floor  
Trim Ring**

- 1) Finish: Polished.

**FR0051**

**FR0051**

**Flange Ring, 10.62 ID  
x 14.50 OD**



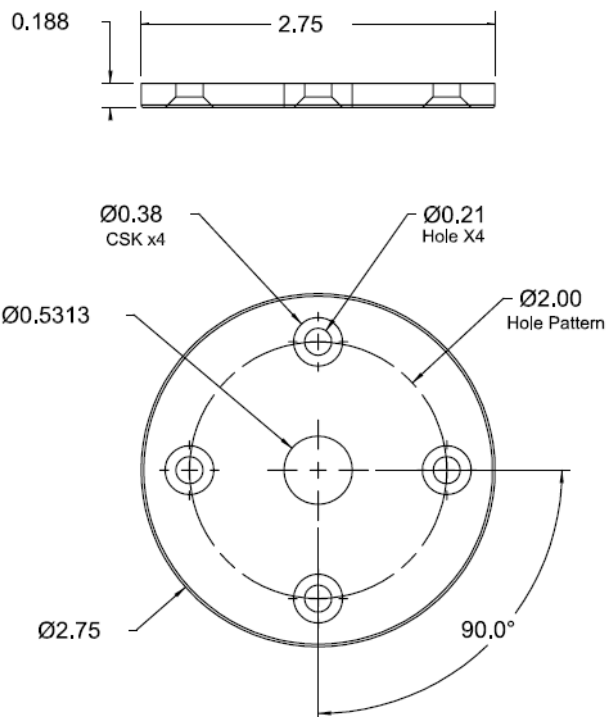
1) Finish: Polished.



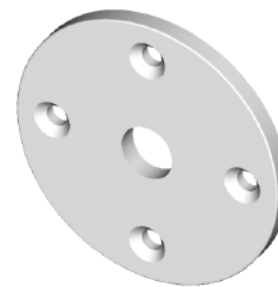
**FR0052**

**FR0052**

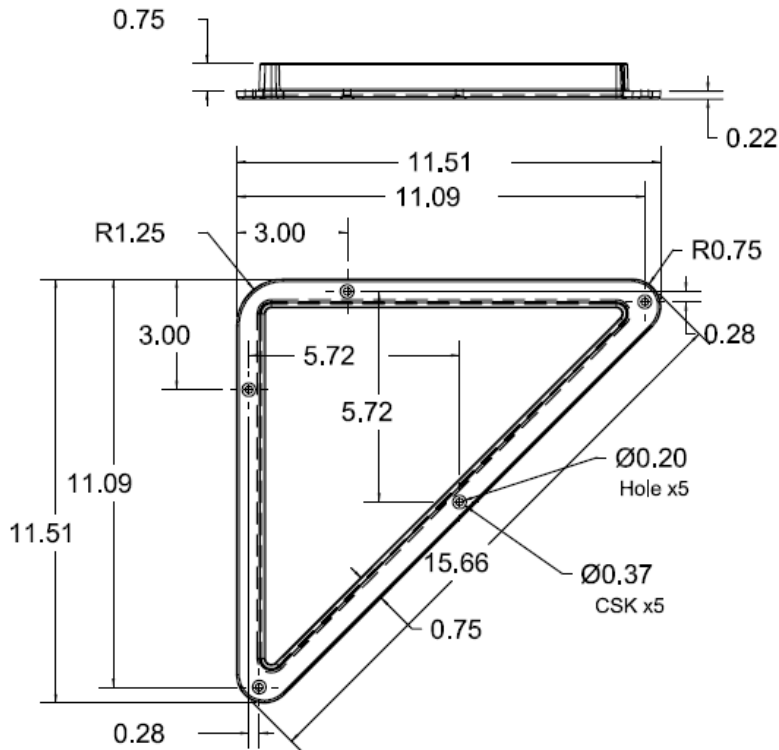
**Flange Ring, 2.75 OD  
x .53 ID**



1) Finish: Polished.  
2) Material: 6061-T6 Aluminum



**FR0054**



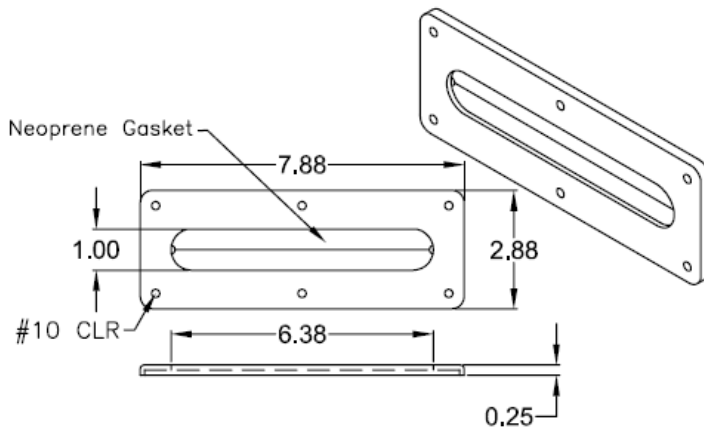
**FR0054**

**Wheel Chock Flange Trim**

1) Finish: Polished.



**FR1004**



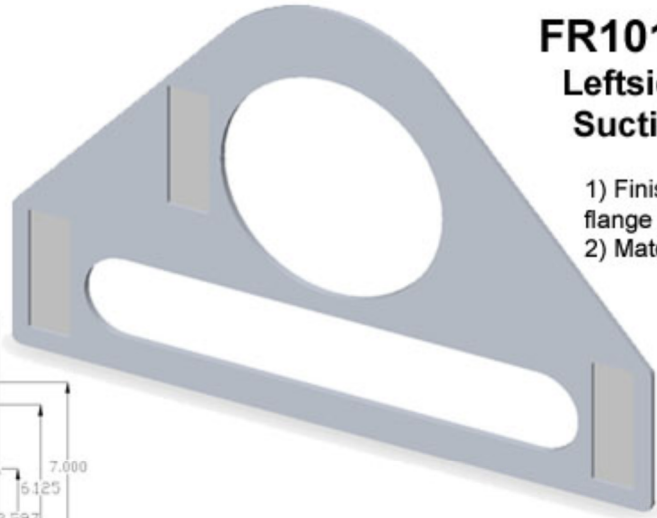
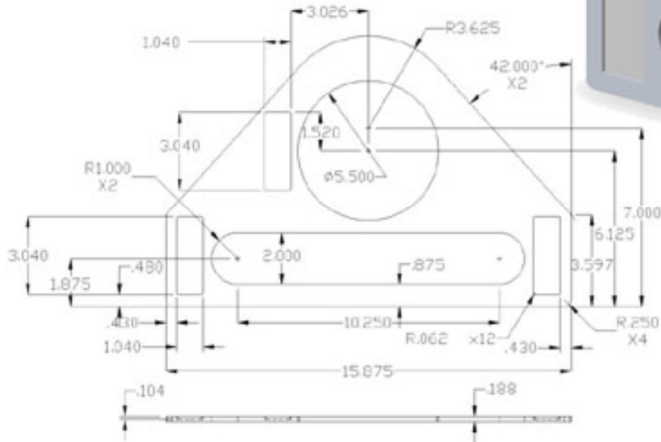
**FR1004**  
**Slot Plate with Gasket (6 3/8" Inside Length)**

1) Designed to use a single neoprene gasket (slit down the center) to "capture" the rod and seal around the rod handle.  
2) Finish: Polished or 120 grt directional ground. Neoprene gasket is black.

FR101294021

**FR101294021**  
**Leftside Panel**  
**Suction Ring**

- 1) Finish: Exterior flange is polished.
- 2) Material: AL 6061



FR101294022

**FR101294022**  
**Rightside Panel**  
**Suction Ring**

- 1) Finish: Exterior flange is polished.
- 2) Material: AL 6061

