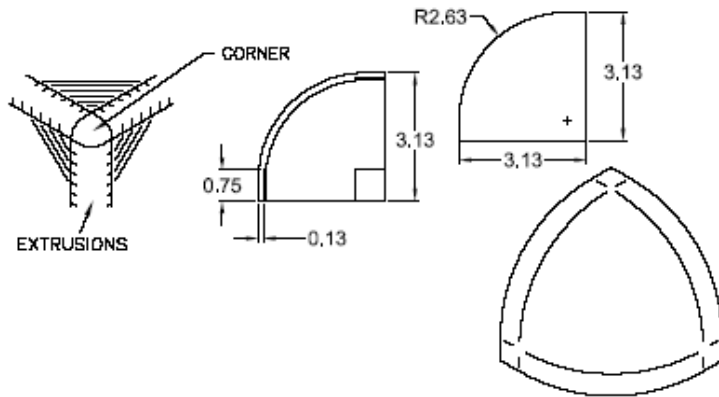


# Modular Corners

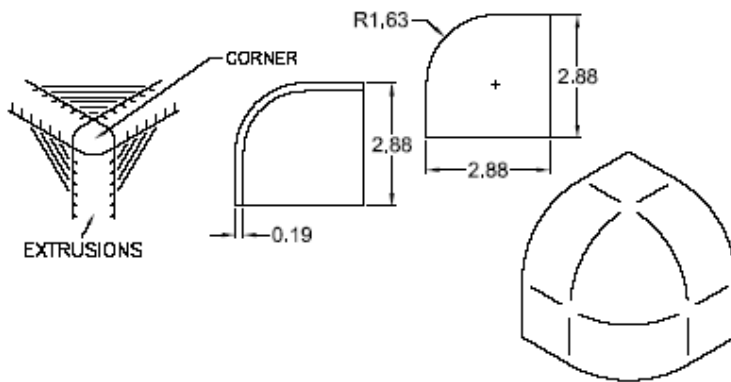
**MC0001**



## **MC0001 Modular Corner (Weld in)**

- 1) Finish: Ground and wheel-a-brated.
- 2) Purpose: To eliminate the need for mitering corners of extrusions.

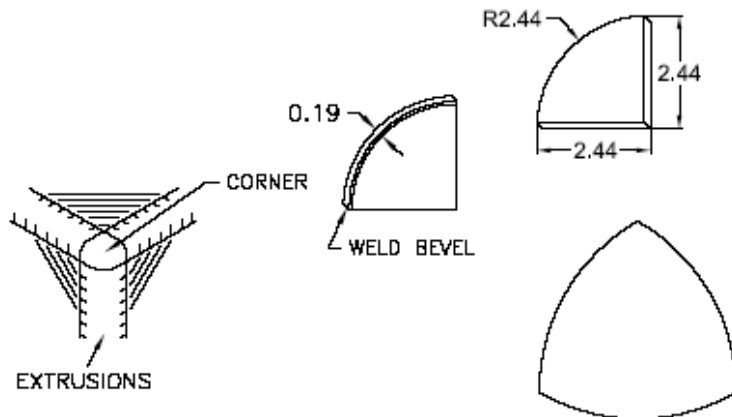
**MC0003**



## **MC0003 Modular Corner (Weld In)**

- 1) Finish: Ground and wheel-a-brated.
- 2) Purpose: To eliminate the need for mitering corners of extrusions.

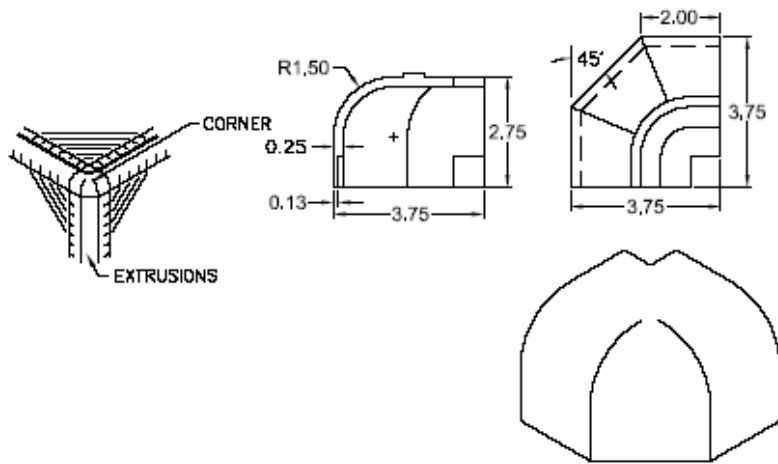
**MC0005**



## **MC0005 Modular Corner (Weld in)**

- 1) Finish: Ground and wheel-a-brated.
- 2) Purpose: To eliminate the need for mitering corners of extrusions.

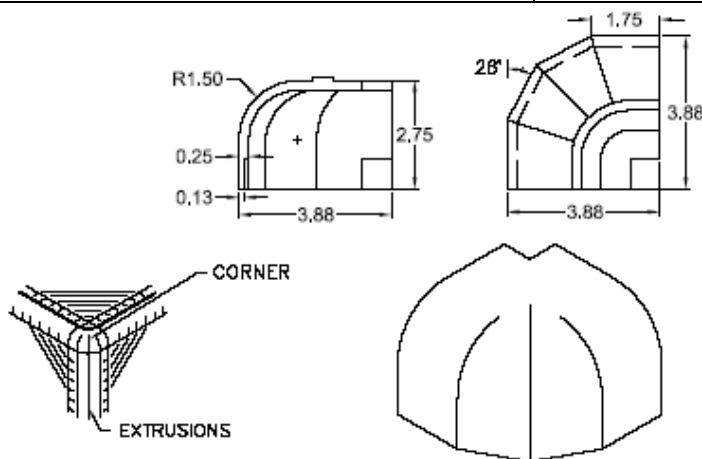
## MC0010



## MC0010 Modular Corner (Weld in)

- 1) Finish: Ground and wheel-a-brated.
- 2) Purpose: To eliminate the need for mitering corners of extrusions.

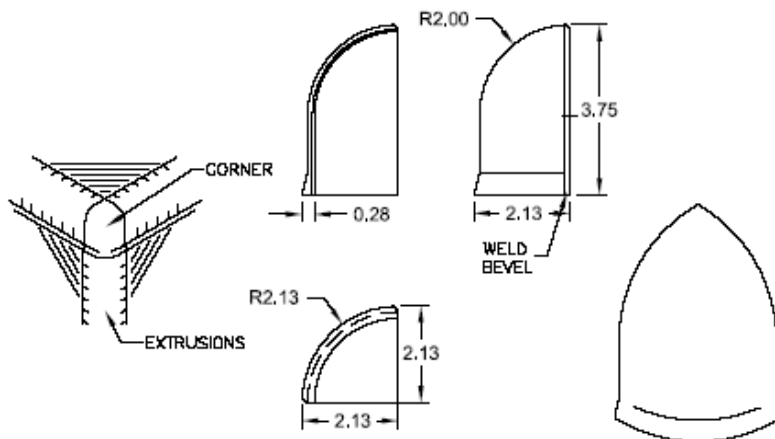
## MC0011



## MC0011 Modular Corner (Weld In)

- 1) Finish: Ground and wheel-a-brated.
- 2) Purpose: To eliminate the need for mitering corners of extrusions.

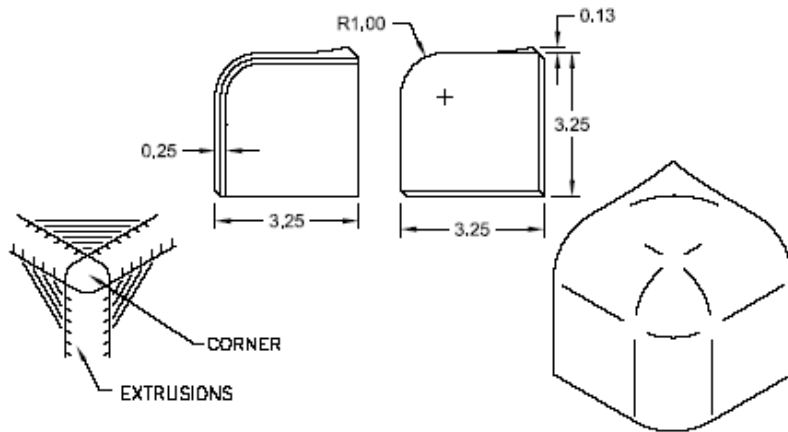
## MC0017



## MC0017 Modular Corner (Weld in)

- 1) Finish: Ground and wheel-a-brated.
- 2) Purpose: To eliminate the need for mitering corners of extrusions.

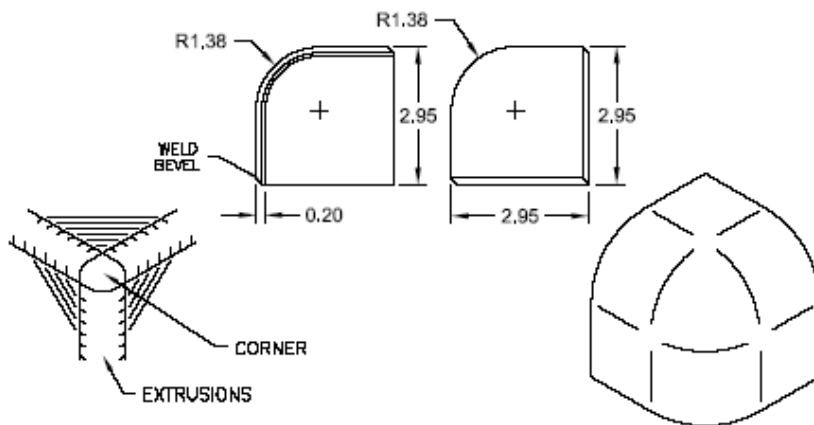
## MC0021



## MC0021 Modular Corner (Weld in)

- 1) Finish: Ground and wheel-a-brated.
- 2) Purpose: To eliminate the need for mitering corners of extrusions.

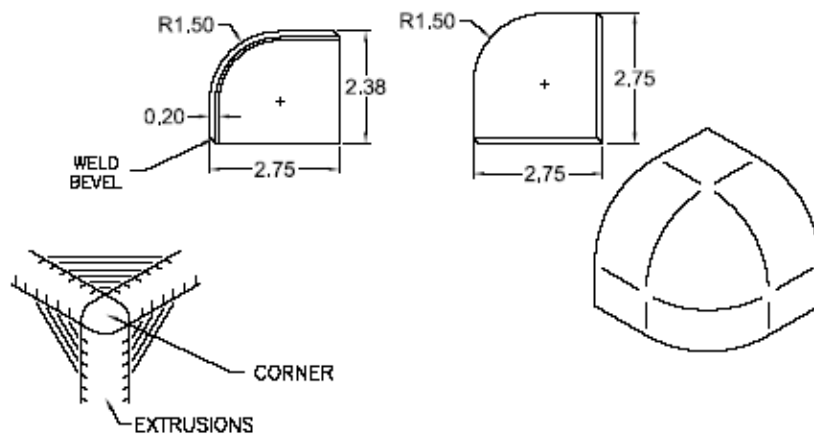
## MC0023



## MC0023 Modular Corner (Weld In)

- 1) Finish: Ground and wheel-a-brated.
- 2) Purpose: To eliminate the need for mitering corners of extrusions.

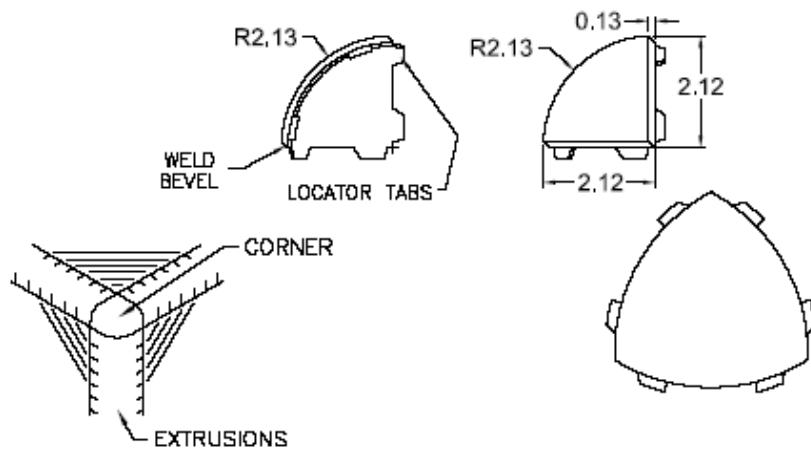
## MC0026



## MC0026 Modular Corner (Weld in)

- 1) Finish: Ground and wheel-a-brated.
- 2) Purpose: to eliminate the need for mitering corners of extrusions.

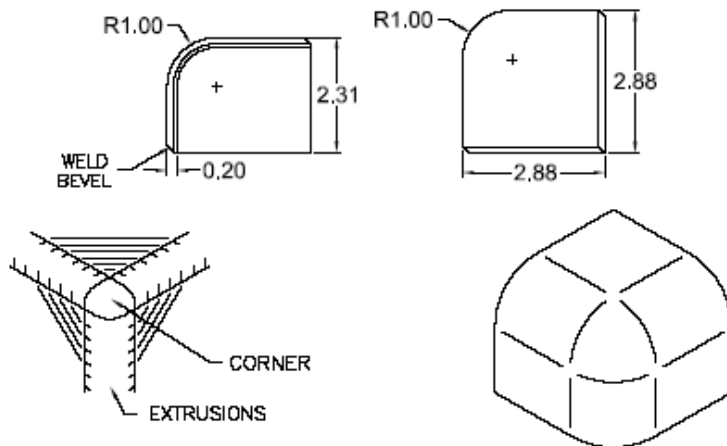
## MC0027



## MC0027 Modular Corner (Weld in)

- 1) Finish: Ground and wheel-a-brated.
- 2) Purpose: to eliminate the need for mitering corners of extrusions.

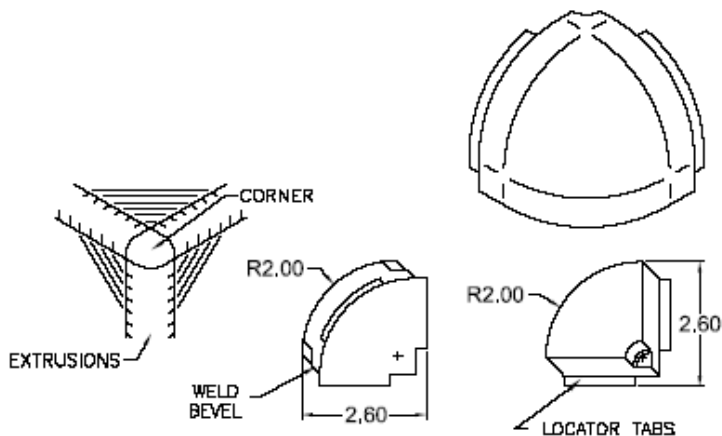
## MC0028



## MC0028 Modular Corner (Weld In)

- 1) Finish: Ground and wheel-a-brated.
- 2) Purpose: to eliminate the need for mitering corners of extrusions.

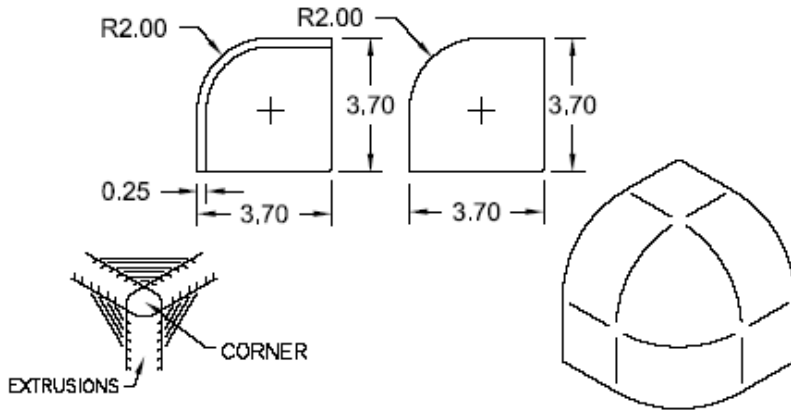
## MC0033



## MC0033 Modular Corner (Weld in)

- 1) Finish: Ground and wheel-a-brated.
- 2) Purpose: to eliminate the need for mitering corners of extrusions.

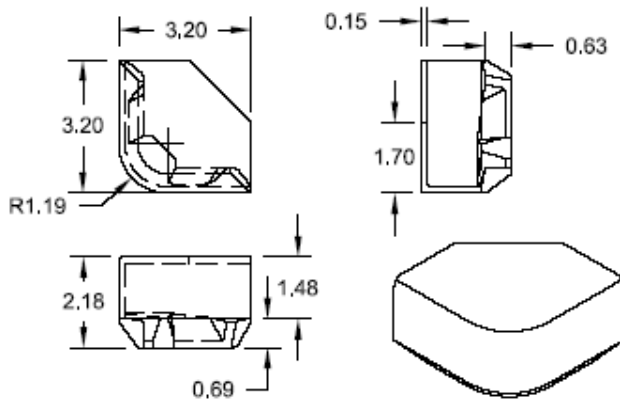
### MC0037



### MC0037 Modular Corner (Weld in)

- 1) Finish: Ground and wheel-a-brated.
- 2) Purpose: to eliminate the need for mitering corners of extrusions.

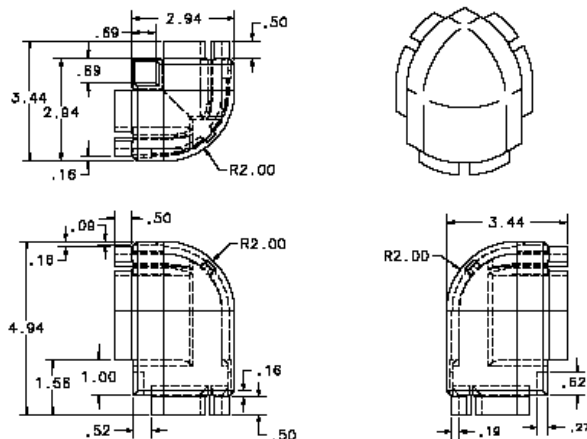
### MC0052



### MC0052 Horizontal Corner

- 1) Finish: Polished.

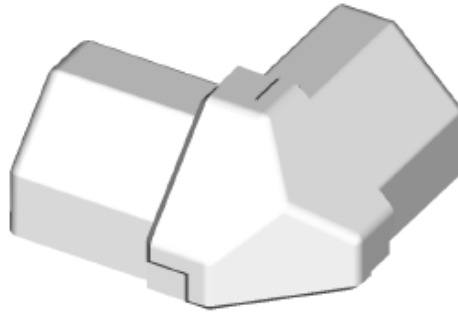
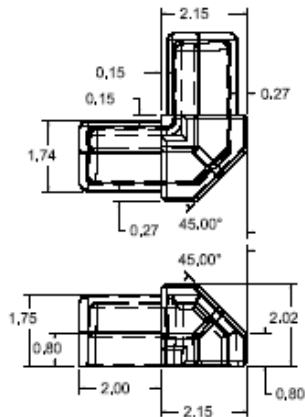
### MC0061



### MC0061 Modular Corner (Weld in)

- 1) Finish: Ground and wheel-a-brated.
- 2) Purpose: to eliminate the need for mitering the corners of extrusions.

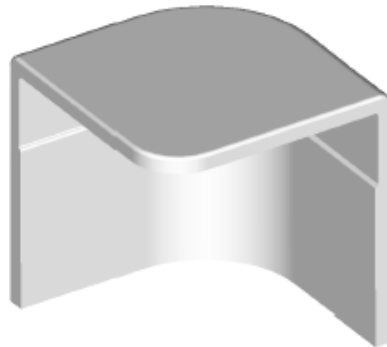
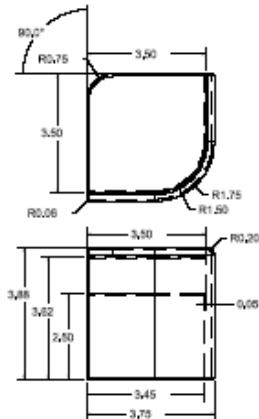
## MC0063



## MC0063 Modular Corner

- 1) Finish: Ground and wheel-a-brated.
- 2) Purpose: to eliminate the need for mitering the corners of extrusions.

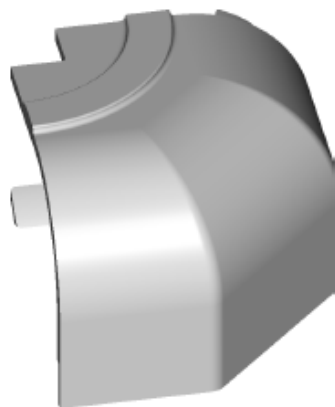
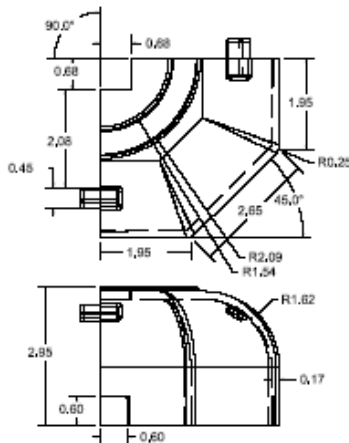
## MC0071



## MC0071 Modular Corner

- 1) Finish: wheel-a-brated.
- 2) Purpose: to eliminate the need for mitering the corners of extrusions.

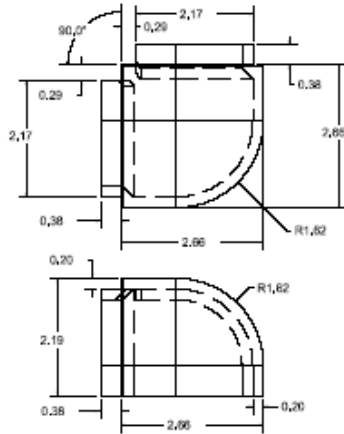
## MC0075



## MC0075 Corner Cover (Weld in)

- 1) Finish: Ground and wheel-a-brated.
- 2) Purpose: to eliminate the need for mitering the corners of extrusions.

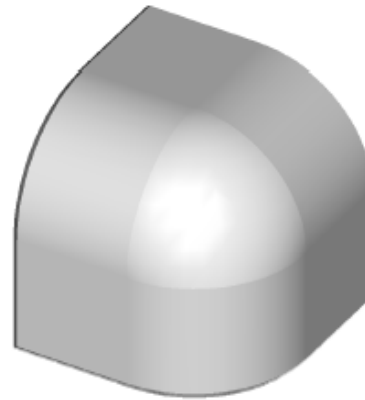
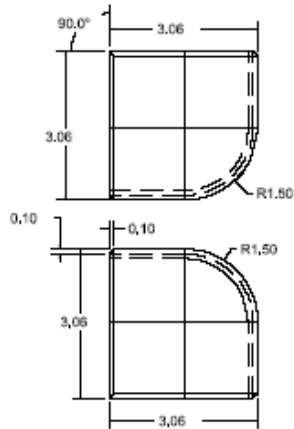
### MC0076



### MC0076 Corner Cover (Weld in)

- 1) Finish: Ground and wheel-a-brated.
- 2) Purpose: to eliminate the need for mitering the corners of extrusions.

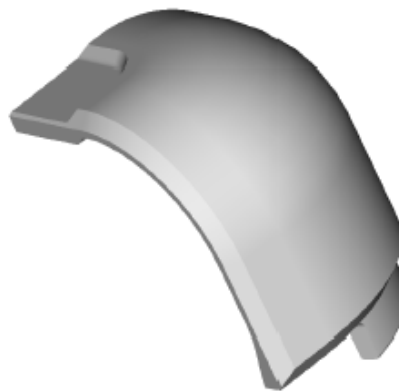
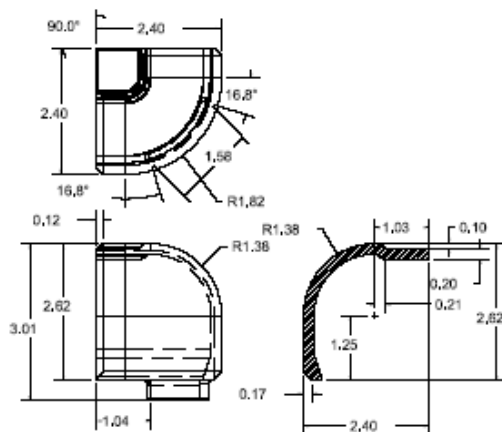
### MC0077



### MC0077 Corner Cover (Weld in)

- 1) Finish: Ground and wheel-a-brated.
- 2) Purpose: to eliminate the need for mitering the corners of extrusions.

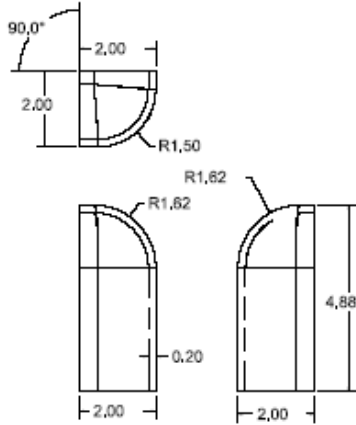
### MC0079



### MC0079 Corner Cover (Weld in)

- 1) Finish: VFM.
- 2) Purpose: to eliminate the need for mitering the corners of extrusions.

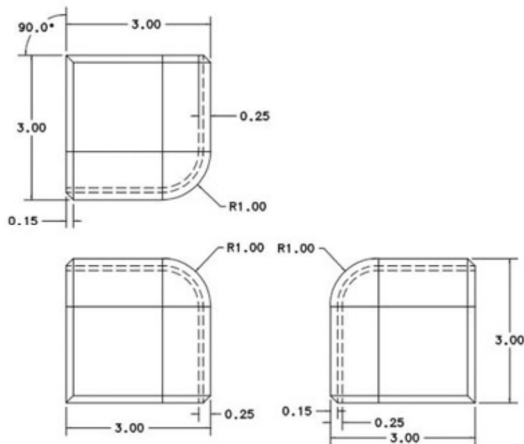
## MC0080



## MC0080 Corner Cover (Weld in)

- 1) Finish: Wheel-a-brated.
- 2) Purpose: to eliminate the need for mitering the corners of extrusions.

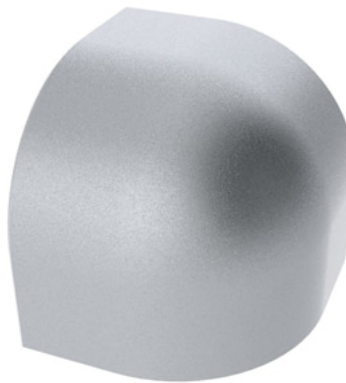
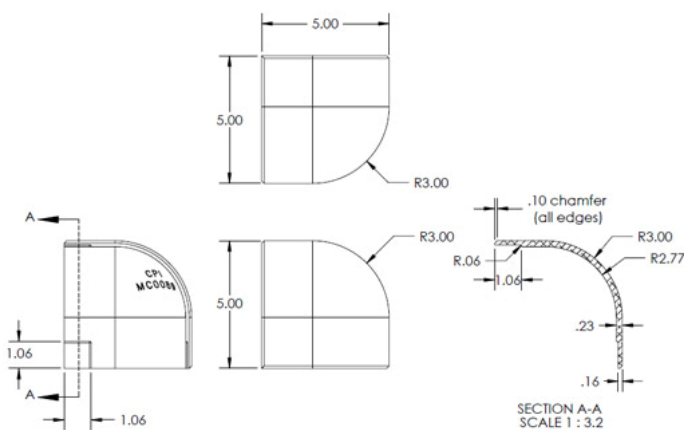
## MC0083



## MC0083 90d. Modular Corner Cap

- 1) Finish: wheel-a-brated.

## MC0089

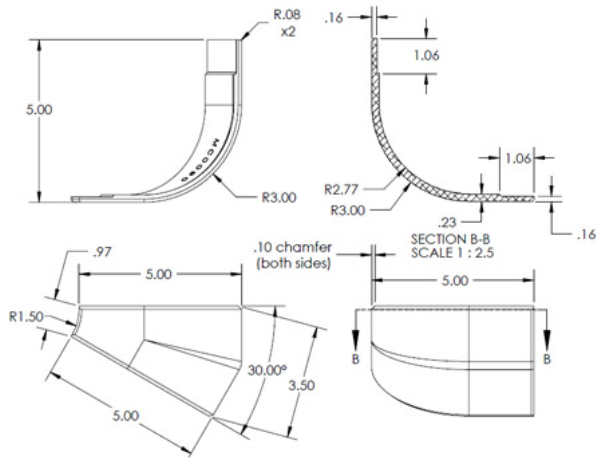


## MC0089 90d., R3.0 Corner Casting

- 1) Finish: wheel-a-brated or ball-burnished.



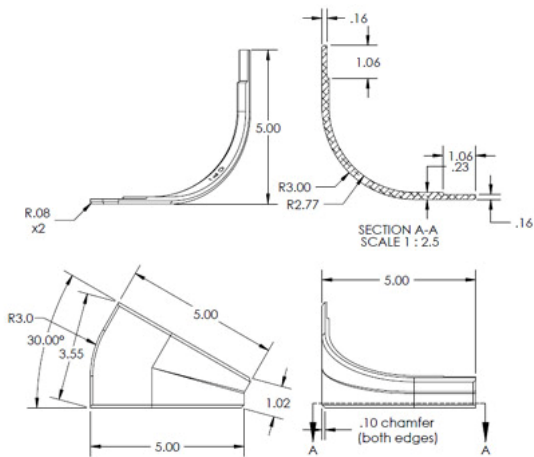
## MC0090



## MC0090 30d., R3.0 Corner Casting

1) Finish: wheel-a-brated or ball-burnished.

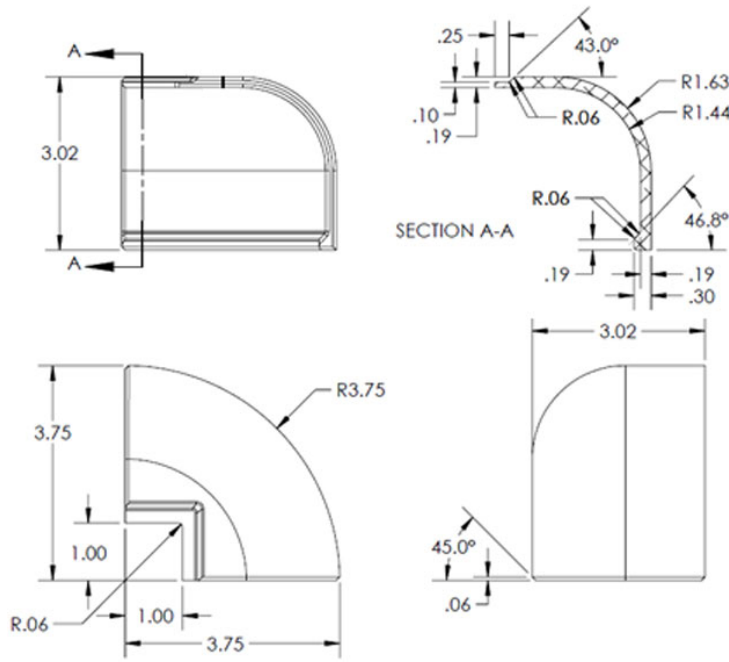
## MC0091



## MC0091 30d., R3.0 Corner Casting

1) Finish: wheel-a-brated or ball-burnished.

# MC0094

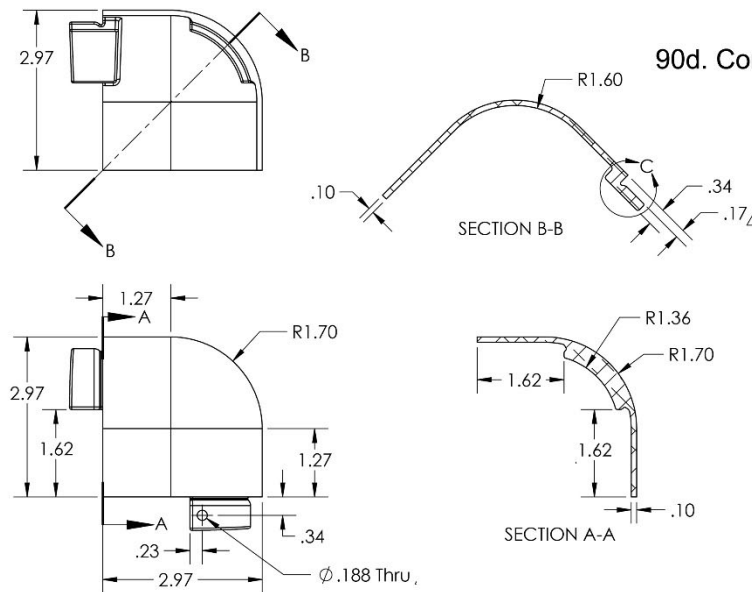


## MC0094 90d. Corner Casting



1) Finish: wheel-a-brated

# MC0096



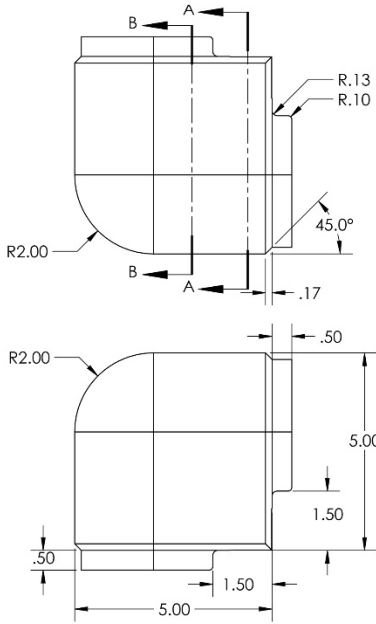
## MC0096 90d. Corner Cap Casting w/ tabs x2



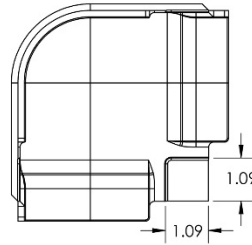
1) Finish: vfm

# MC0097

## MC0097 90d. Corner Cap Casting

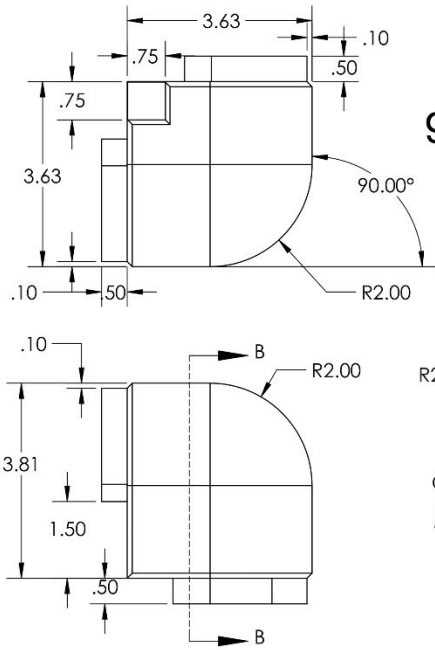


1) Finish: wheel-a-brated.

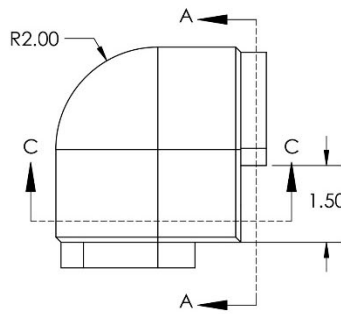


# MC0098

## MC0098 90d. Corner Cap Casting



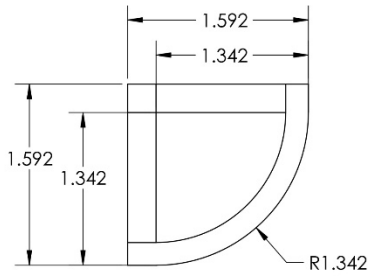
1) Finish: ball-burnished.



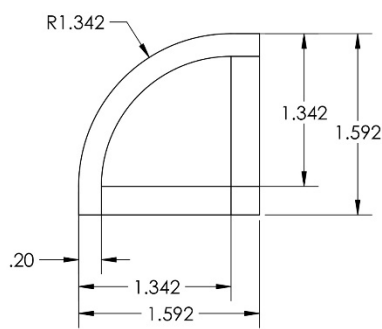
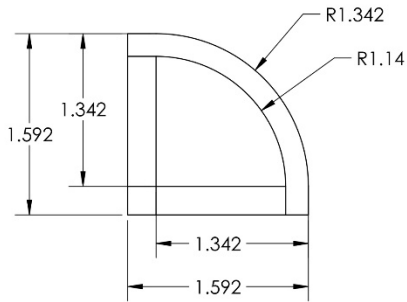
**MC0099**

# MC0099

## 90d. Corner Cap Casting



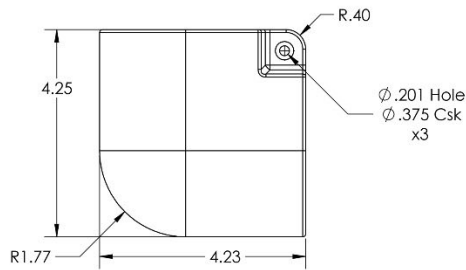
1) Finish: ball-burnished.



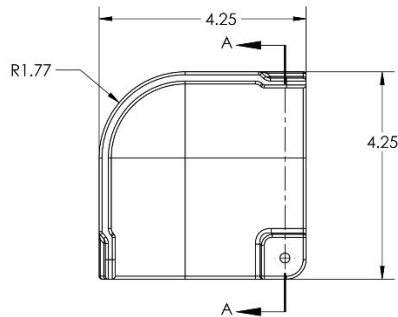
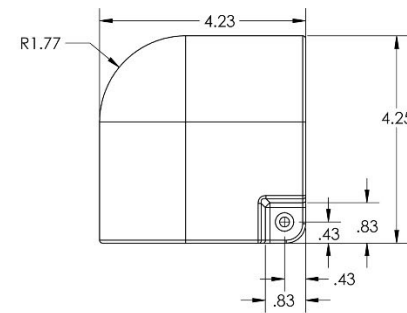
**MC0101**

# MC0101

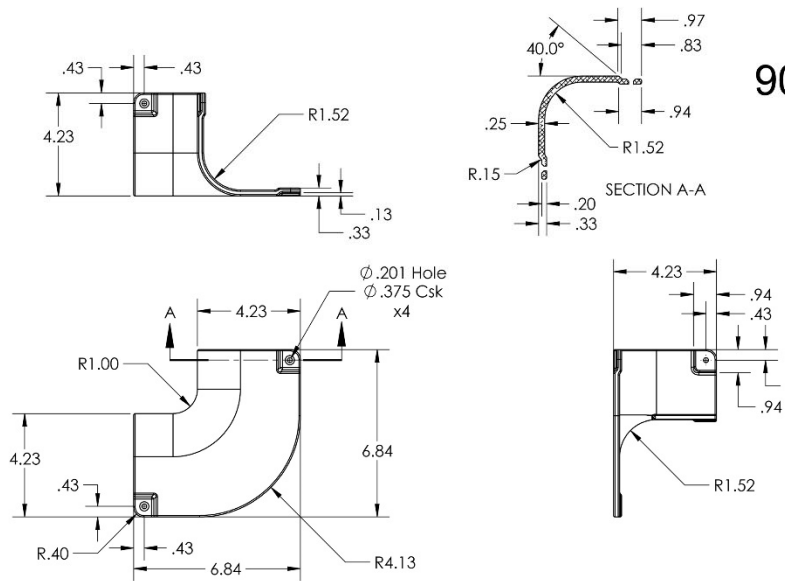
## 90d. Corner Cap Casting



1) Finish: polished.



# MC0102



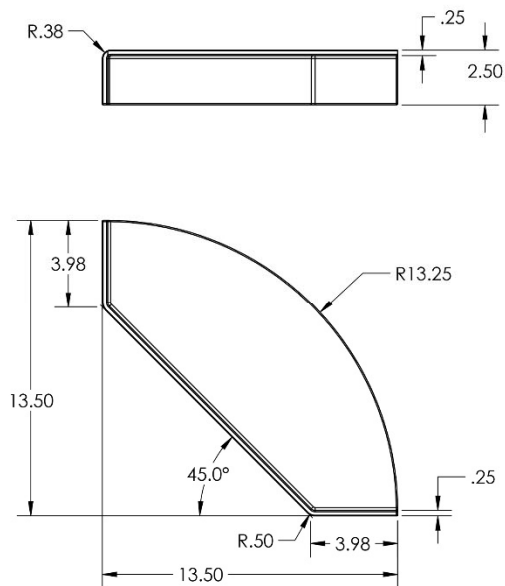
# MC0102

## 90d. Inside Corner Cap Casting



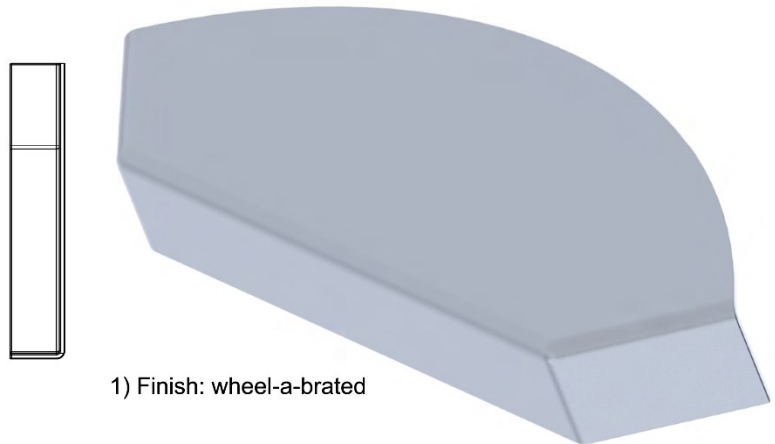
1) Finish: polished.

# MC0103



# MC0103

## 90d. Shelving Corner Casting



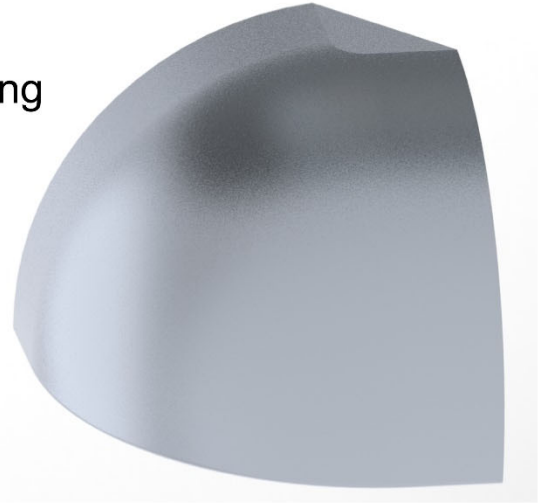
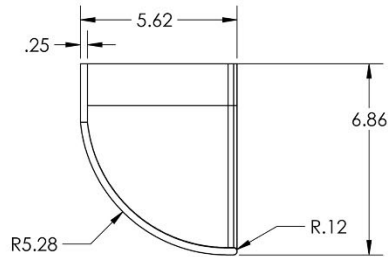
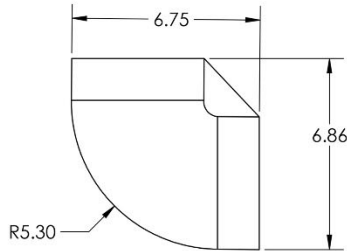
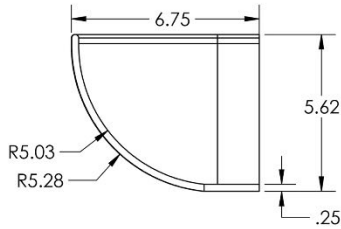
1) Finish: wheel-a-brated

## MC0104

# MC0104

## 90d. Corner Cap Casting

1) Finish: ball-burnished



## MC51145

# MC51145

## Modular Corner (Weld in)

1) Finish: Ground and wheel-a-brated.  
2) Purpose: to eliminate the need for mitering the corners of extrusions.

