



Cast Products, Inc.

Installation Procedure

SA3501 or SA3503

INSIDE-THE-BUMPER MOUNT

FORE-WARN SIREN SPEAKER

1) The speaker unit is required to be on a flat surface with at least 5 3/4" vertical height for the trim bezel to bolt through. See FIGURE 1.

2) Remove the speaker trim bezel from the siren unit. Position the trim on the face of the bumper in the appropriate location, and mark the center of the four .280" holes pre-drilled in the trim. Make sure the trim is level or parallel with the bumper. Also mark the inside opening of the trim. See FIGURE 2.

3.) Drill the eight clearance holes for the #1/4-20 bolts and cut the opening in the bumper face for the speaker to protrude through.

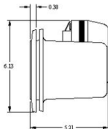


FIGURE 1

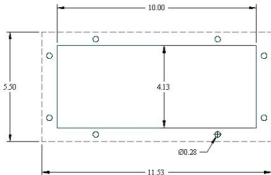


FIGURE 2

SA3501 or SA3503

8 OF EACH:

1/4-20 x 1 1/4"
STAINLESS STEEL OVAL HEAD



1/4" FLAT
WASHER



1/4" LOCK
WASHER



1/4-20 NYLON
LOCK NUT



FOR 1 SIREN

- 4) Install the speaker assembly in the bumper (from the rear of the bumper) and locate the trim bezel around the face of the housing, from the front side.
- 5) Install the #1/4-20 x 1 1/4" screws, washers, lock-washers and #1/4-20 Nylon Lock-nuts. It is suggested to use some sort of medium grade Lock-tite on the treads as well.
- 6) Tighten all hardware and continue with the electrical connections as per their manufacturers directions.

