



Cast Products, Inc.

Installation Procedure

SA4205 "COM-PAK" Siren Speaker for '99-2000 Ford Explorer 2x4 & 4x4

NOTICE:

Do not remove the four inner bolts. (#1/4-20) These bolt the siren horn, cone, and 100 watt driver together.

The hardware supplies contains all that is necessary for custom installations for the Ford Explorer.

The maximum material thickness of the mounting surface for the supplied hardware is 3/16" (.1875") If the mounting surface is thicker than 3/16", it is recommended to use bolts of "Grade 8" specification.

The "weep" hole designed into the siren driver is aligned with the wire exit hole in the siren housing. Keep the "weep" hole/wire exit on the bottom or at the lowest possible point on all installations.

NOTE: CPI recommends using a medium grade "Loc-tite" (or equivalent) on all mounting hardware.

1) On the driver side of the vehicle, carefully insert the speaker assembly behind the bumper area. Place the top "wing" of the support bracket over the grill support rail (FIGURE 1) This is the area where the siren speaker will be mounted. After the speaker unit is oriented into it's mounting position, insert the 1/4-20 x 3" bolts from the top of the bracket. (FIGURE 1)

2) With the two bolts inserted, place the SB4004 bracket behind the unit. (FIGURE 2) Align the 1/4" bolts with the pre-drilled holes in the bracket. Insert the bolts through the SB4004 bracket and add lock-washer and nut to each bolt. (DO NOT TIGHTEN) From the back of the siren unit, inset the 3/8-16 x 3/4" through both brackets to secure them together.

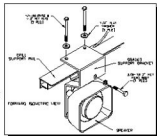


FIGURE 1

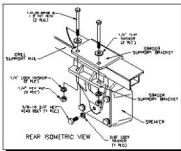


FIGURE 2

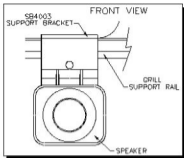


FIGURE 3

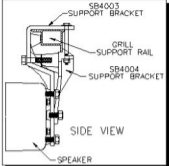
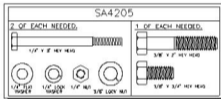


FIGURE 4



3) From the front of the assembly, insert the 3/8-16 x 2" bolt through the SB4003 (front bracket), and into the threaded boss of the SB4004 support bracket.

4) With the siren speaker unit in the proper mounting area, and with all hardware installed, check contact points of the two support brackets to ensure proper installation. **Tighten all mounting hardware.**

5) Continue with the electrical connection of the Siren Amplifier per the manufacturer's instruction.

